



## Standard Wall Niche Install Suggestions

Copyright © 2006

**WARNING!** Our standard wall niche weighs approximately 35 pounds. If you have any physical limitation or condition, consult your physician or obtain assistance before lifting and setting the wall niche into place. These are general ideas only, and should never supersede safety, common sense, or applicable laws and regulations. Carefully consult qualified installation specialist(s) before installing these products. RWM-inc. assumes no liability for accidents or improper installations.

**Tools Needed:** Level, drill, 1/8" bit, 1/4" counter sink, keyhole saw, stud finder, construction adhesive, hammer, and nail set.

**1.** Locate position for niche. Use the stud finder to locate wall studs on either side. The niche will fit between any standard studs.

**2.** Determine the seat (i.e. platform of the niche) elevation (should be 4-1/2" higher than the bottom of the niche).

**3.** Mark a level line between the studs at the seat elevation (note: overall height of niche is 45").

**4.** Carefully cut out the template drawn on the box your niche was shipped in.

**5.** Place the template on the level line you made and, using a pencil, lightly trace the outline on the wall.

**6.** Using a keyhole saw, cut and remove the drywall.  
**CAUTION! Be very careful to avoid cutting any electrical or other wiring!**

**7.** Set niche into the hole you created. Hold a level along the side of the niche. Once level, use a pencil to trace the niche and then remove it from the wall.

**8.** Lightly mark two framing points outside of the traced line at the top. If desired, mark two additional framing points outside of the traced line at the bottom (see diagram). These will help you determine where to drill your anchoring holes in the niche.

**9.** Set niche back into the hole, align with the traced line, and mark framing for 2-1/4" anchoring finish screws or finish nails.

**10.** Use 1/8" drill bit and 1/4" counter sink to drill holes.

**11.** Line glue along the inside of the traced line on the wall with construction quality adhesive, at approximately a 1/4" bead (i.e. approximately 1/4" diameter thick).

**12.** Set niche in the hole and nail or screw to framing.

**13.** Patch hardware holes with spackle, quickset drywall mud, or bondo.

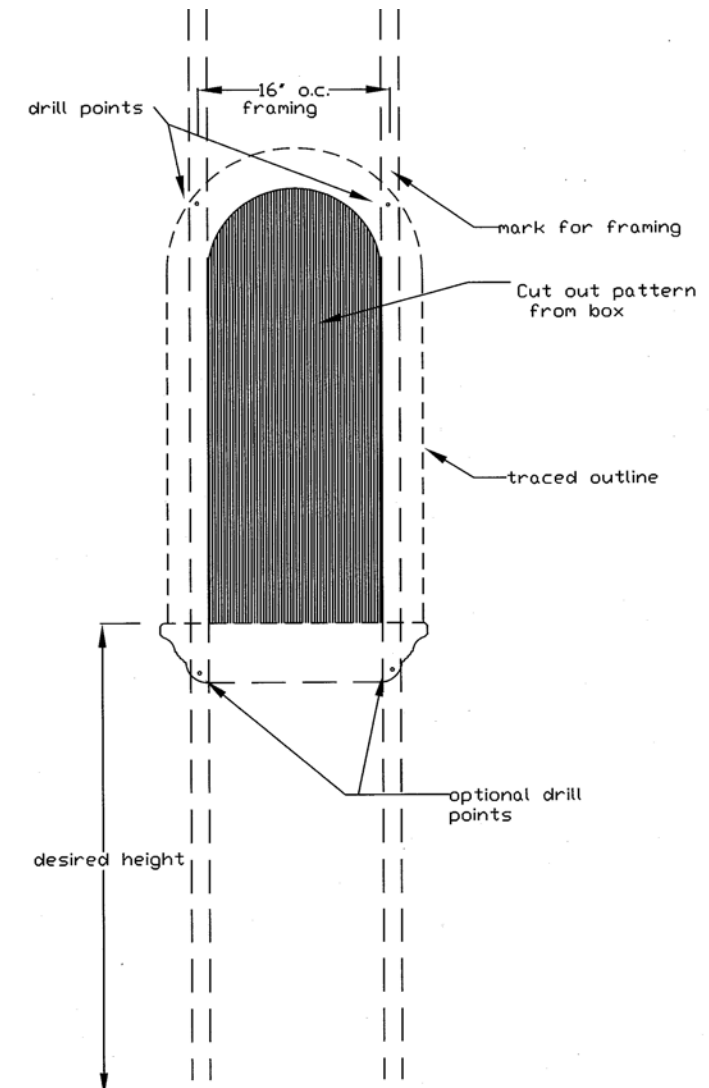
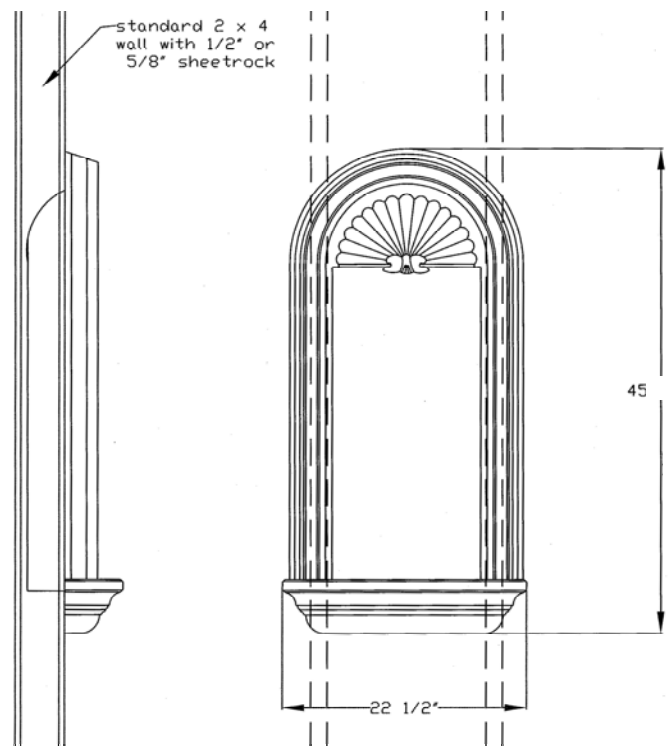
**14.** Sand, caulk, prime, and paint (oil- or water-based is fine). For best finish, we recommend lightly sanding the entire surface prior to priming.

If you have any questions or concerns, please don't hesitate to contact us:

**Toll Free Phone:** 1.800.414.8349

**E-mail:** info@rwm-inc.com

**Website:** www.rwm-inc.com



RWM-inc. (Round Window Mouldings Inc.)  
155 N. 500 W.  
Salt Lake City, Utah 84116