



© Copyright 2018

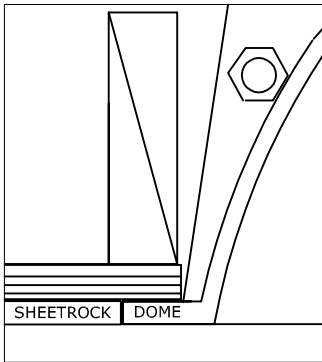
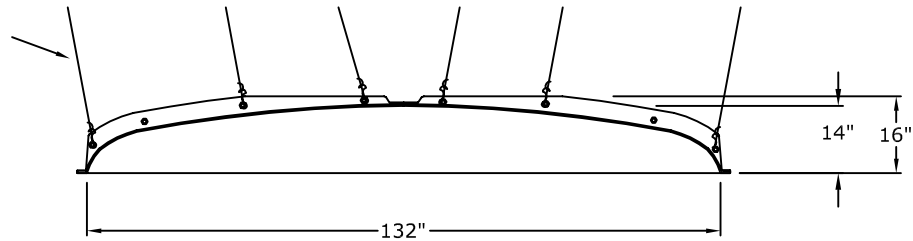
RWM Inc.

6419 South Cottonwood Street, Murray, Utah 84107
 Phone: 801-268-2400 Toll Free: 1-855-RWM-ARTS (796-2787)
 Fax: 801-268-2522 E-mail: info@rwm-inc.com

Visit our website at www.rwm-inc.com

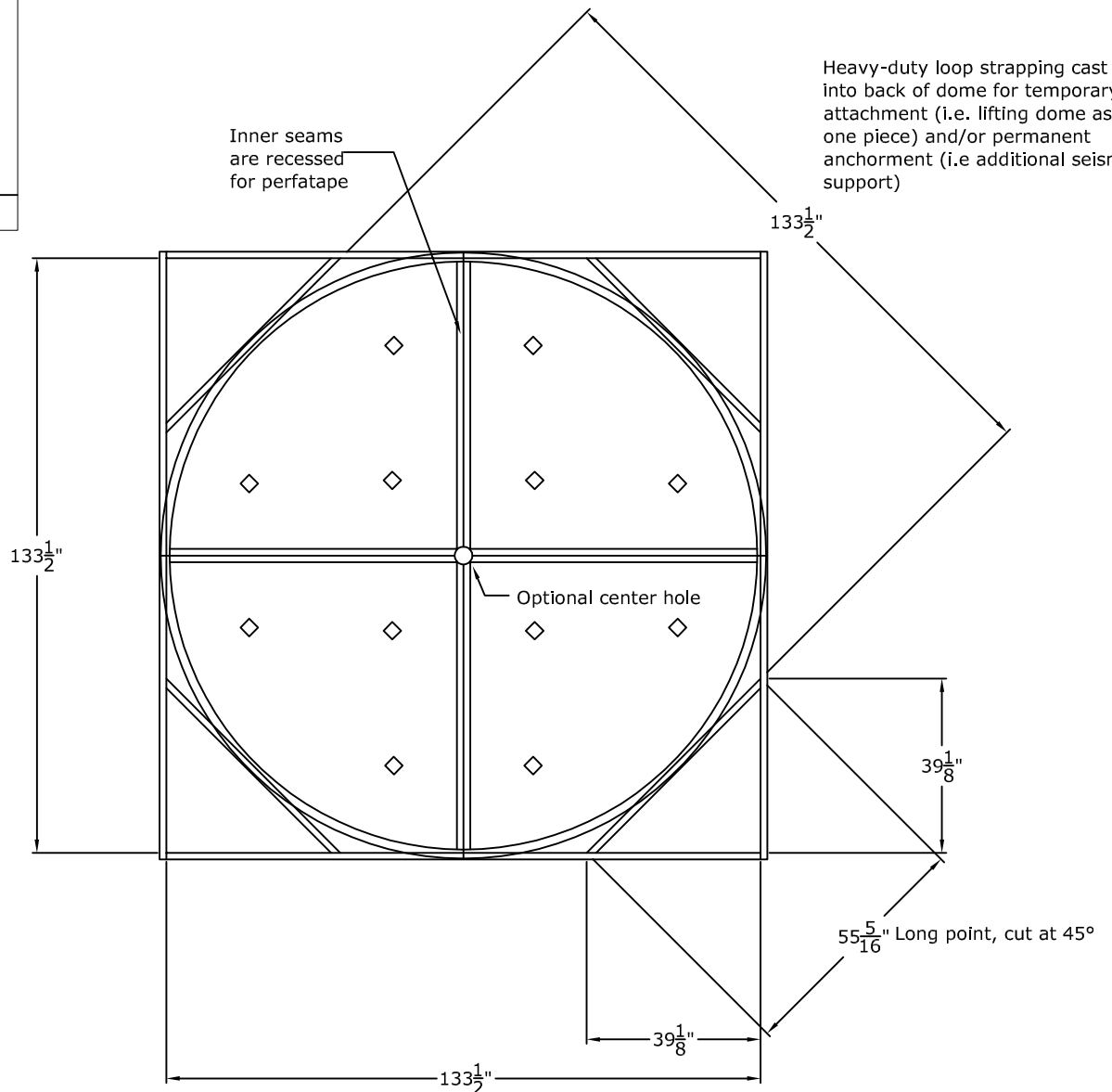
11 Foot Round Recessed Dome: 4 Parts with a 16" Overall Rise

Drill through both
bolt flanges for
permanent #9
tiewire
anchorment
(we recommend a
minimum of two
per flange)



Inner seams
are recessed
for perfatape

Heavy-duty loop strapping cast
into back of dome for temporary
attachment (i.e. lifting dome as
one piece) and/or permanent
anchorment (i.e additional seismic
support)





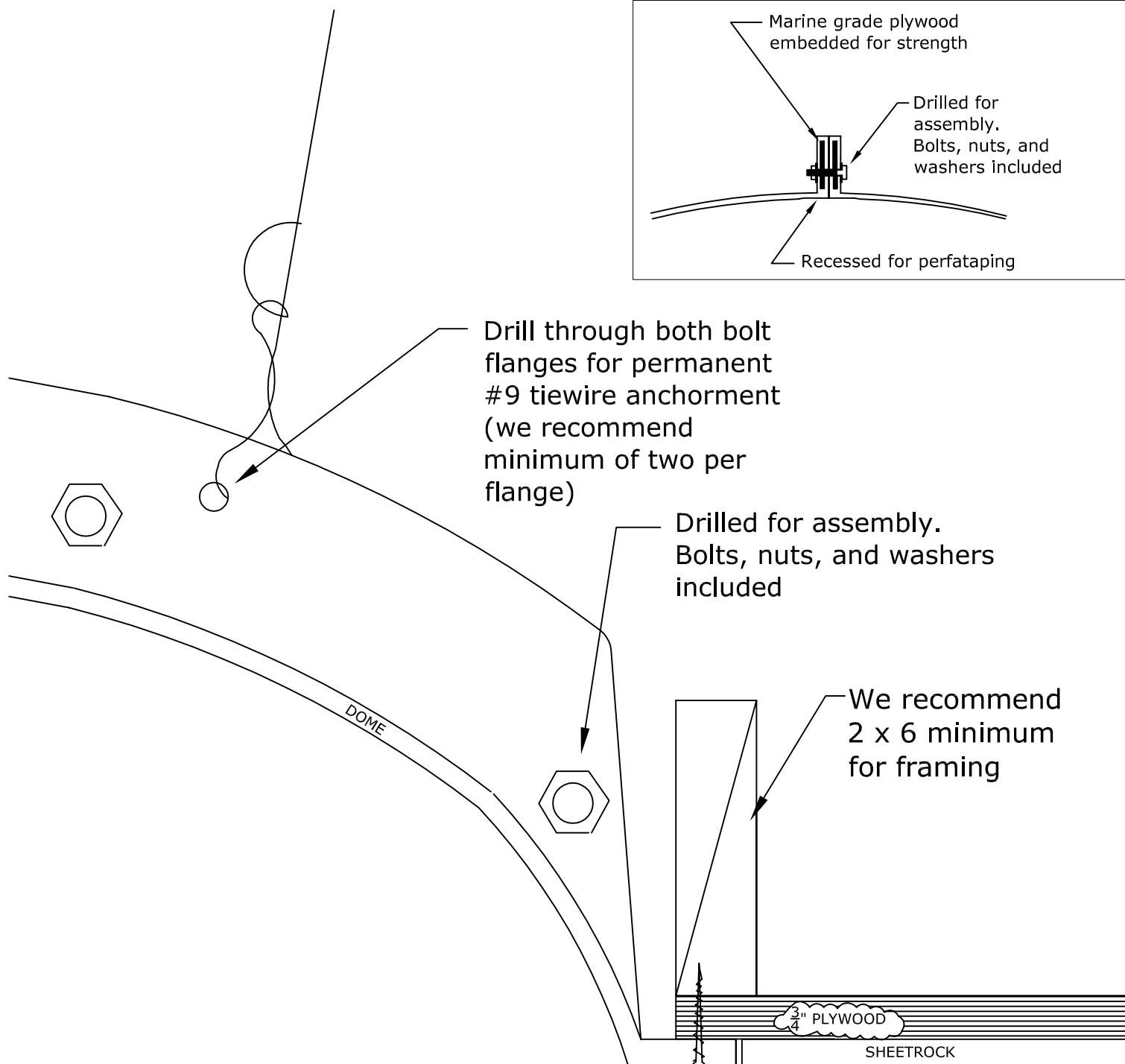
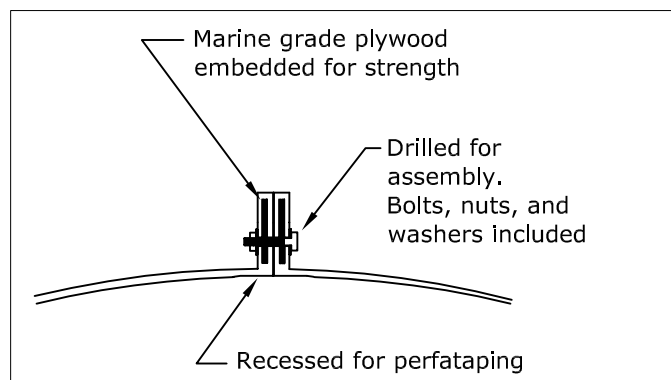
© Copyright 2018

RWM Inc.

6419 South Cottonwood Street, Murray, Utah 84107
Phone: 801-268-2400 Toll Free: 1-855-RWM-ARTS (796-2787)
Fax: 801-268-2522 E-mail: info@rwm-inc.com

Visit our website at www.rwm-inc.com

Bolt Flange Detail: Multi-Piece Domes



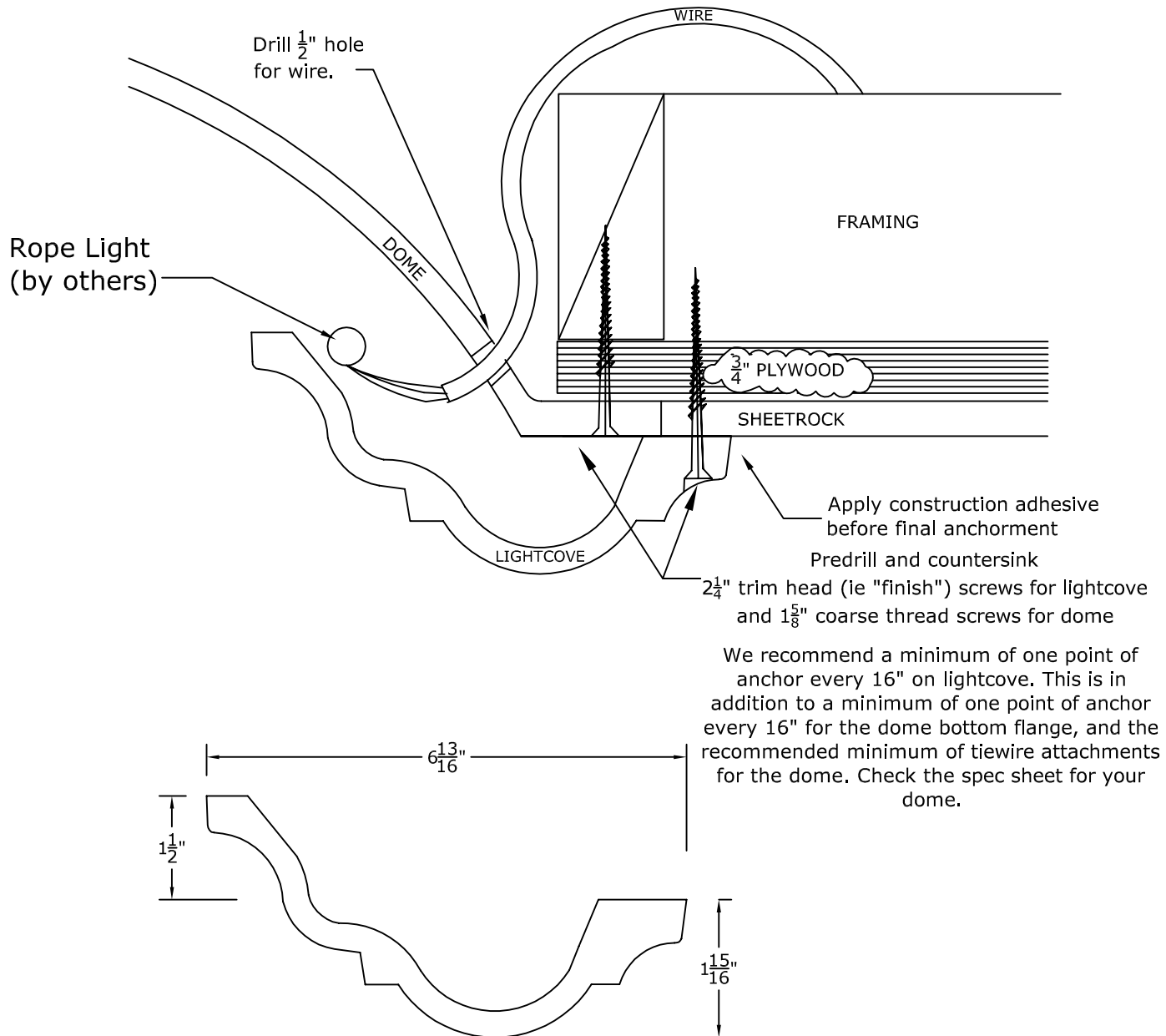


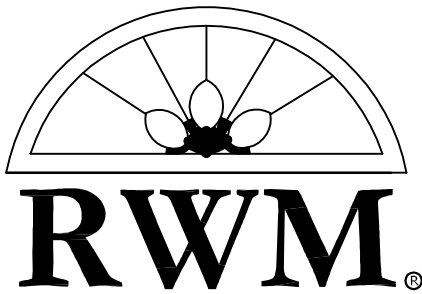
RWM Inc.

6419 South Cottonwood Street, Murray, Utah 84107
 Phone: 801-268-2400 Toll Free: 1-855-RWM-ARTS (796-2787)
 Fax: 801-268-2522 E-mail: info@rwm-inc.com

Visit our website at www.rwm-inc.com

Traditional Lightcove: For Select Larger Domes





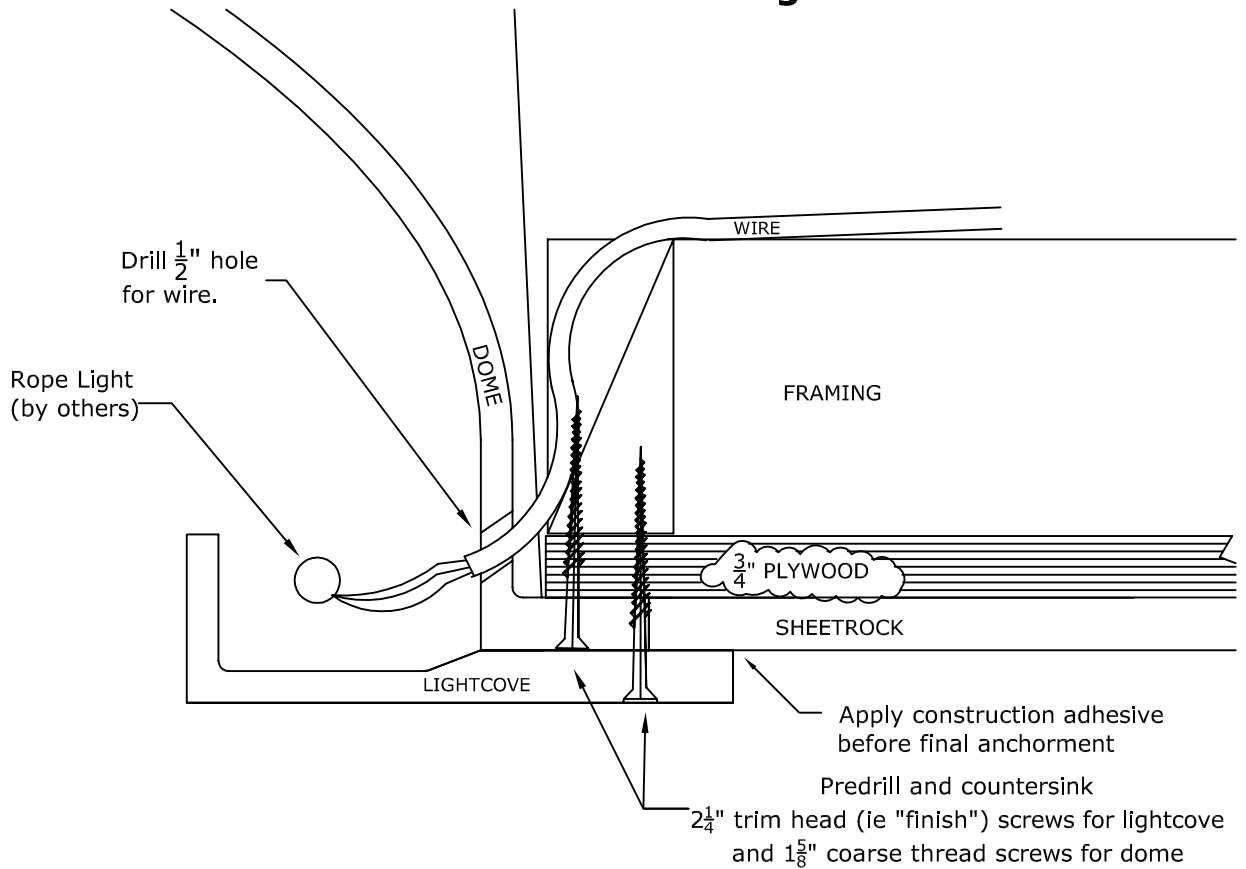
© Copyright 2018

RWM Inc.

6419 South Cottonwood Street, Murray, Utah 84107
 Phone: 801-268-2400 Toll Free: 1-855-RWM-ARTS (796-2787)
 Fax: 801-268-2522 E-mail: info@rwm-inc.com

Visit our website at www.rwm-inc.com

Contemporary Lightcove: For Select Larger Domes



We recommend a minimum of one point of anchor every 16" on lightcove. This is in addition to a minimum of one point of anchor every 16" for the dome bottom flange, and the recommended minimum of tie wire attachments for the dome. Check the spec sheet for your dome.

