

RWM®

© Copyright 2016

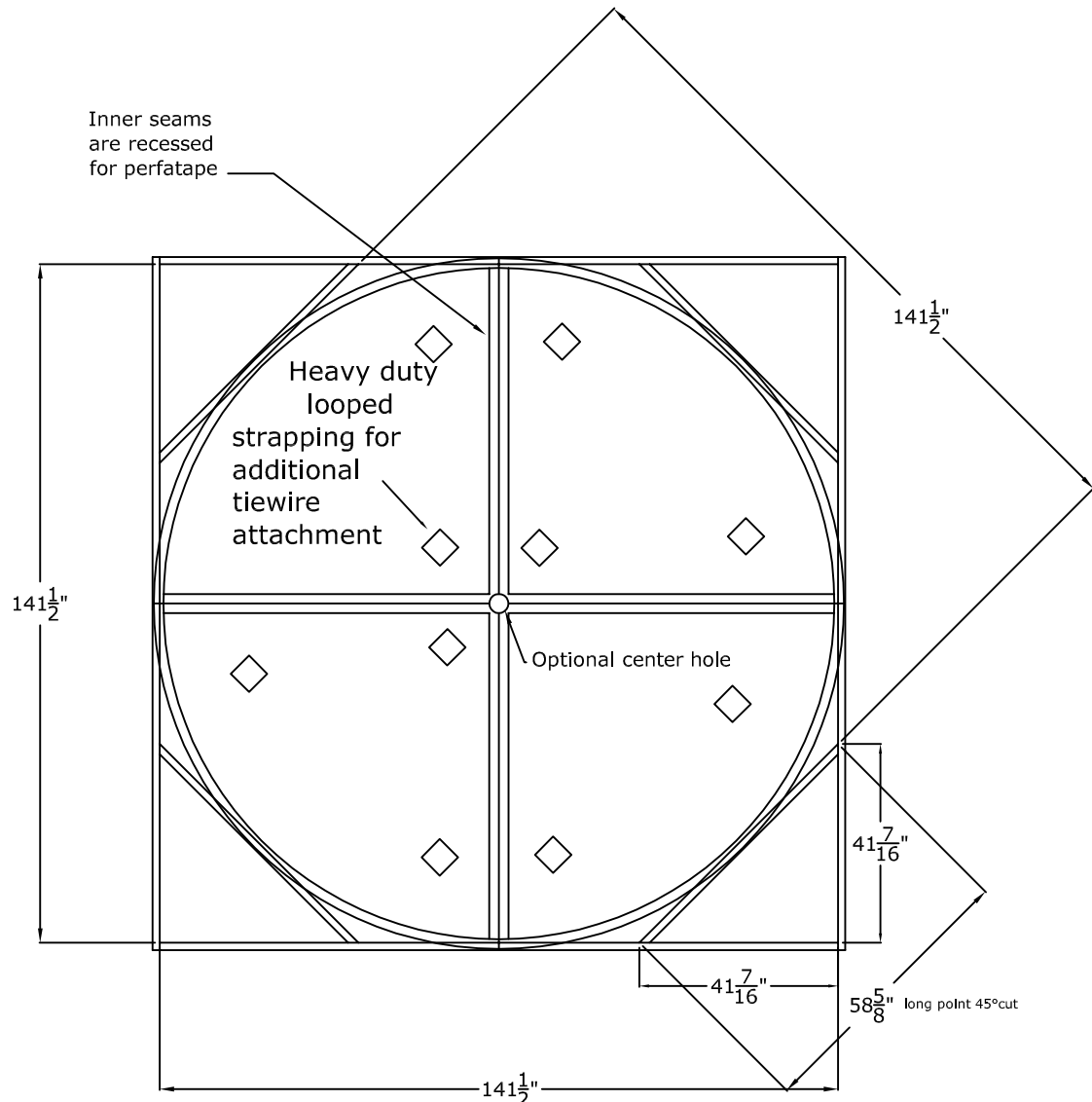
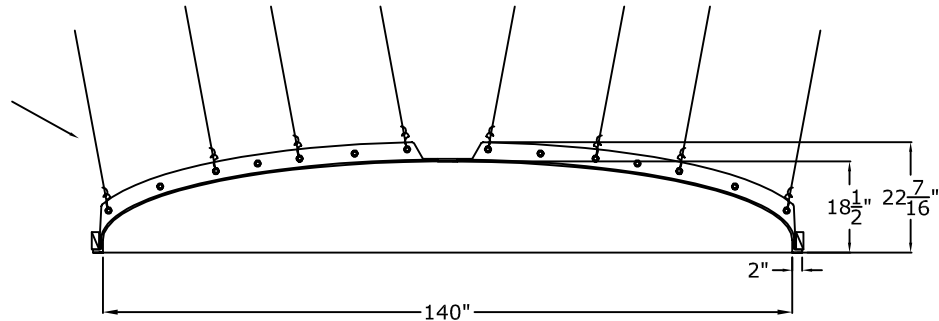
RWM Inc.

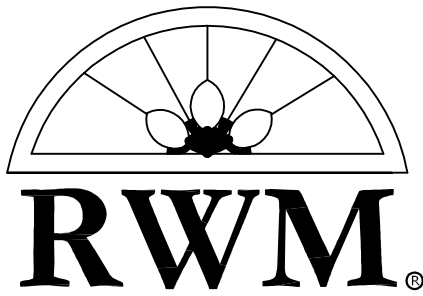
6419 South Cottonwood Street, Murray, Utah 84107
 Phone: 801-268-2400 Toll Free: 1-855-RWM-ARTS (796-2787)
 Fax: 801-268-2522 E-mail: info@rwm-inc.com

Visit our website at www.rwm-inc.com

140" Round Recessed Dome: 4 Part with 22 $\frac{1}{2}$ " Overall Rise

Drill through both bolt
 flanges for permanent
 #9 tiewire
 anchorments
 (we recommend a
 minimum of two per
 flange)





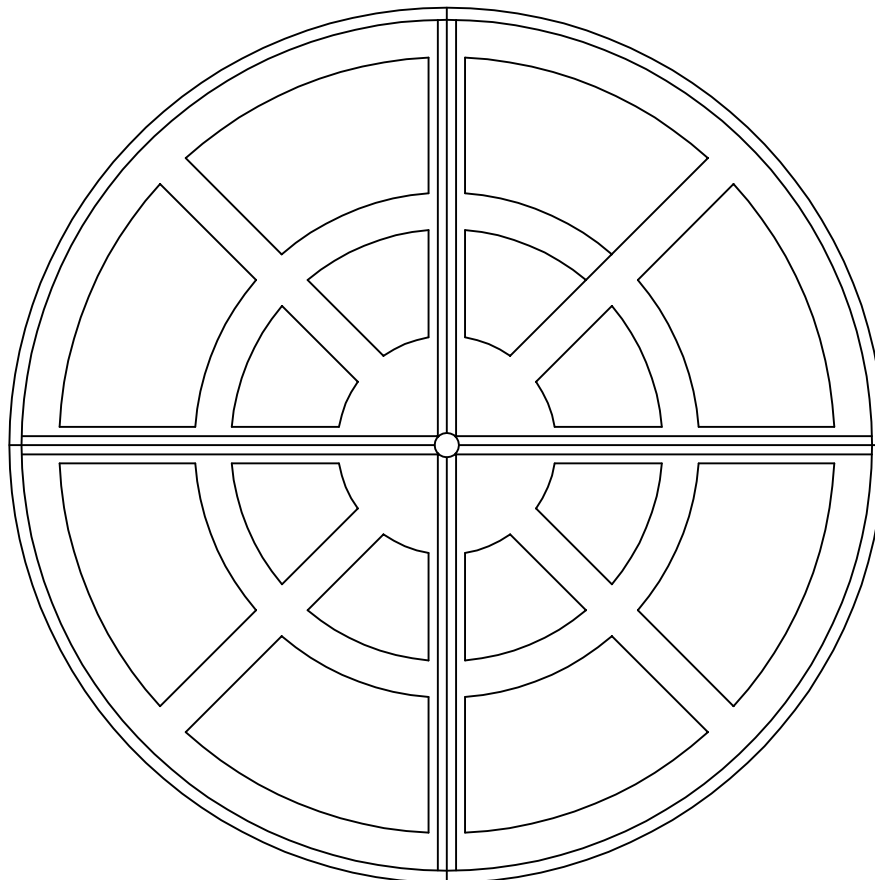
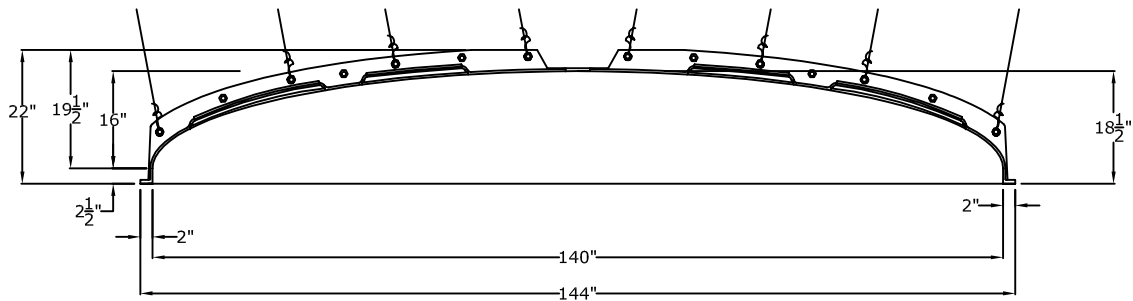
© Copyright 2016

RWM Inc.

6419 South Cottonwood Street, Murray, Utah 84107
 Phone: 801-268-2400 Toll Free: 1-855-RWM-ARTS (796-2787)
 Fax: 801-268-2522 E-mail: info@rwm-inc.com

Visit our website at www.rwm-inc.com

140" Inner Diameter Coffered Dome (16 Panels) with 18 $\frac{1}{2}$ " Inner Rise





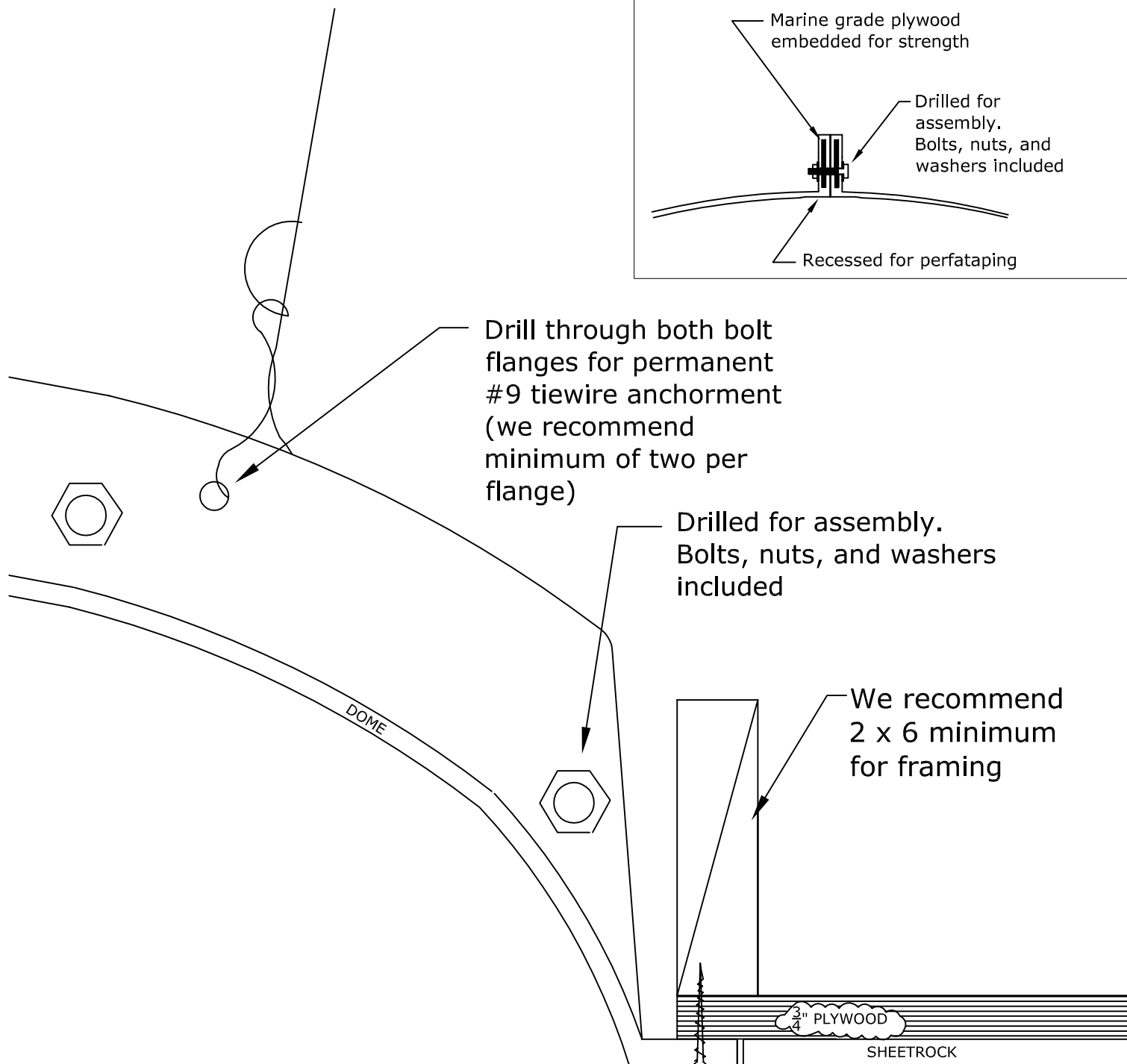
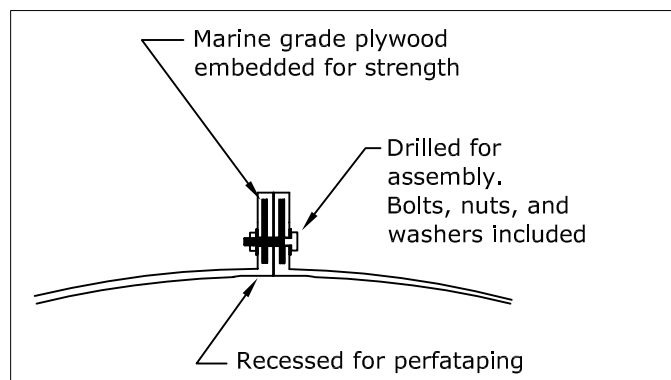
© Copyright 2018

RWM Inc.

6419 South Cottonwood Street, Murray, Utah 84107
Phone: 801-268-2400 Toll Free: 1-855-RWM-ARTS (796-2787)
Fax: 801-268-2522 E-mail: info@rwm-inc.com

Visit our website at www.rwm-inc.com

Bolt Flange Detail: Multi-Piece Domes



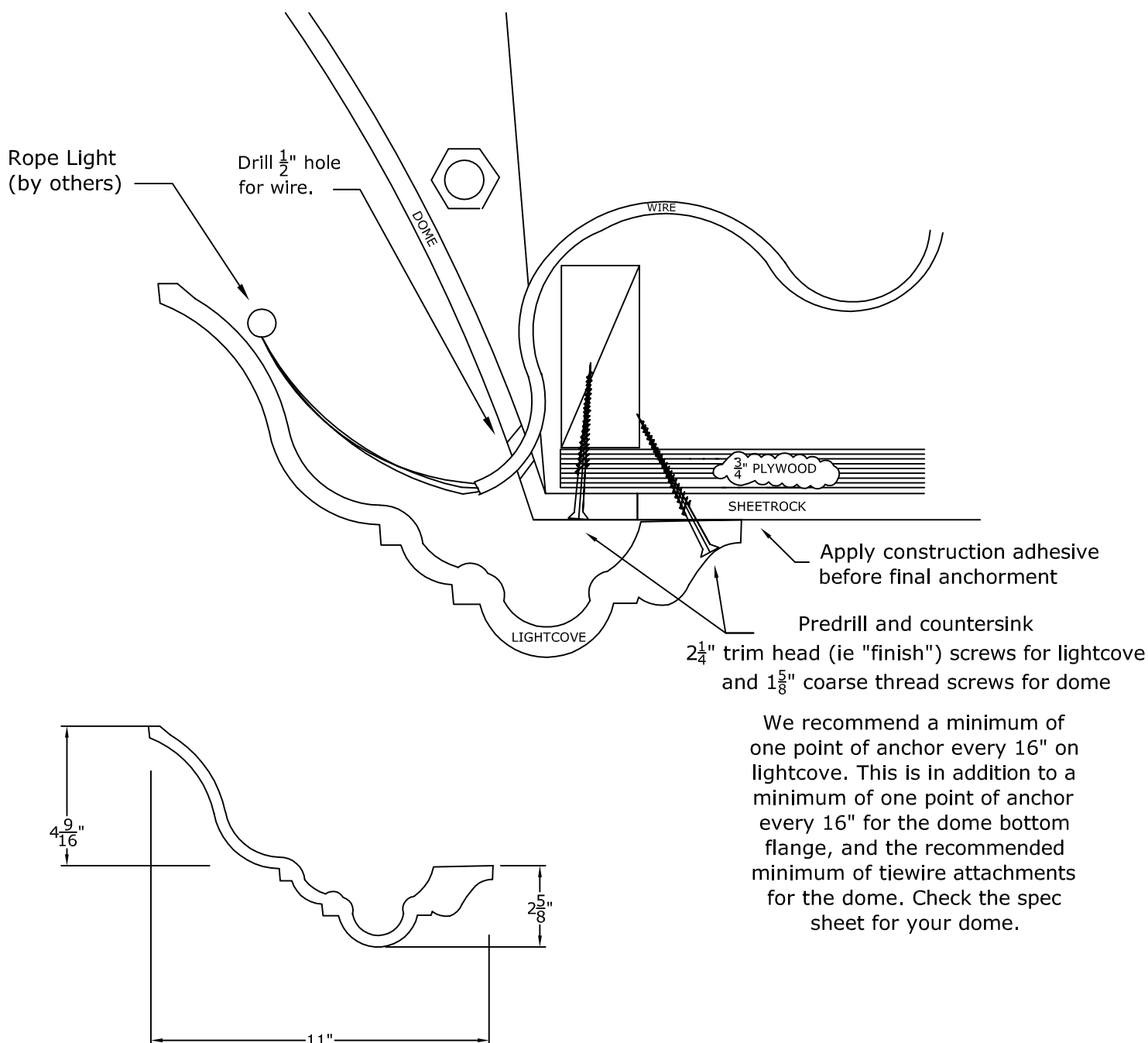


RWM Inc.

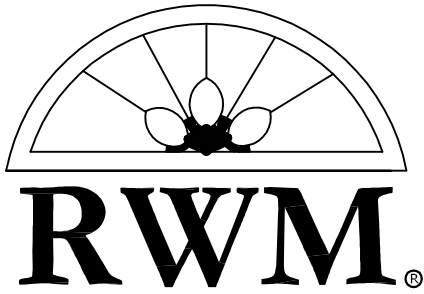
6419 South Cottonwood Street, Murray, Utah 84107
 Phone: 801-268-2400 Toll Free: 1-855-RWM-ARTS (796-2787)
 Fax: 801-268-2522 E-mail: info@rwm-inc.com

Visit our website at www.rwm-inc.com

Larger Traditional Lightcove: For Select Larger Domes



We recommend a minimum of one point of anchor every 16" on lightcove. This is in addition to a minimum of one point of anchor every 16" for the dome bottom flange, and the recommended minimum of tiewire attachments for the dome. Check the spec sheet for your dome.



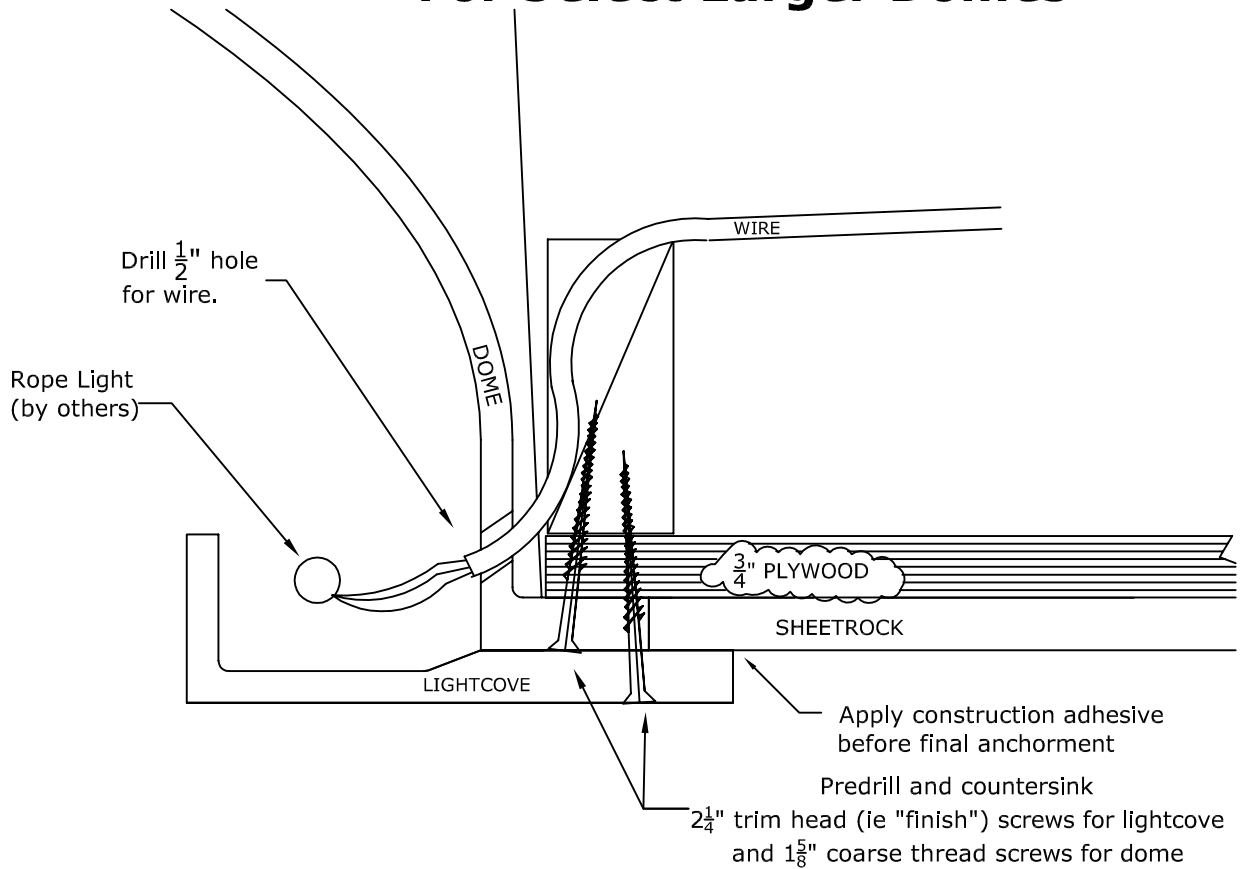
© Copyright 2017

RWM Inc.

6419 South Cottonwood Street, Murray, Utah 84107
 Phone: 801-268-2400 Toll Free: 1-855-RWM-ARTS (796-2787)
 Fax: 801-268-2522 E-mail: info@rwm-inc.com

Visit our website at www.rwm-inc.com

Contemporary Lightcove: For Select Larger Domes



We recommend a minimum of one point of anchor every 16" on lightcove. This is in addition to a minimum of one point of anchor every 16" for the dome bottom flange, and the recommended minimum of tie wire attachments for the dome. Check the spec sheet for your dome.

