

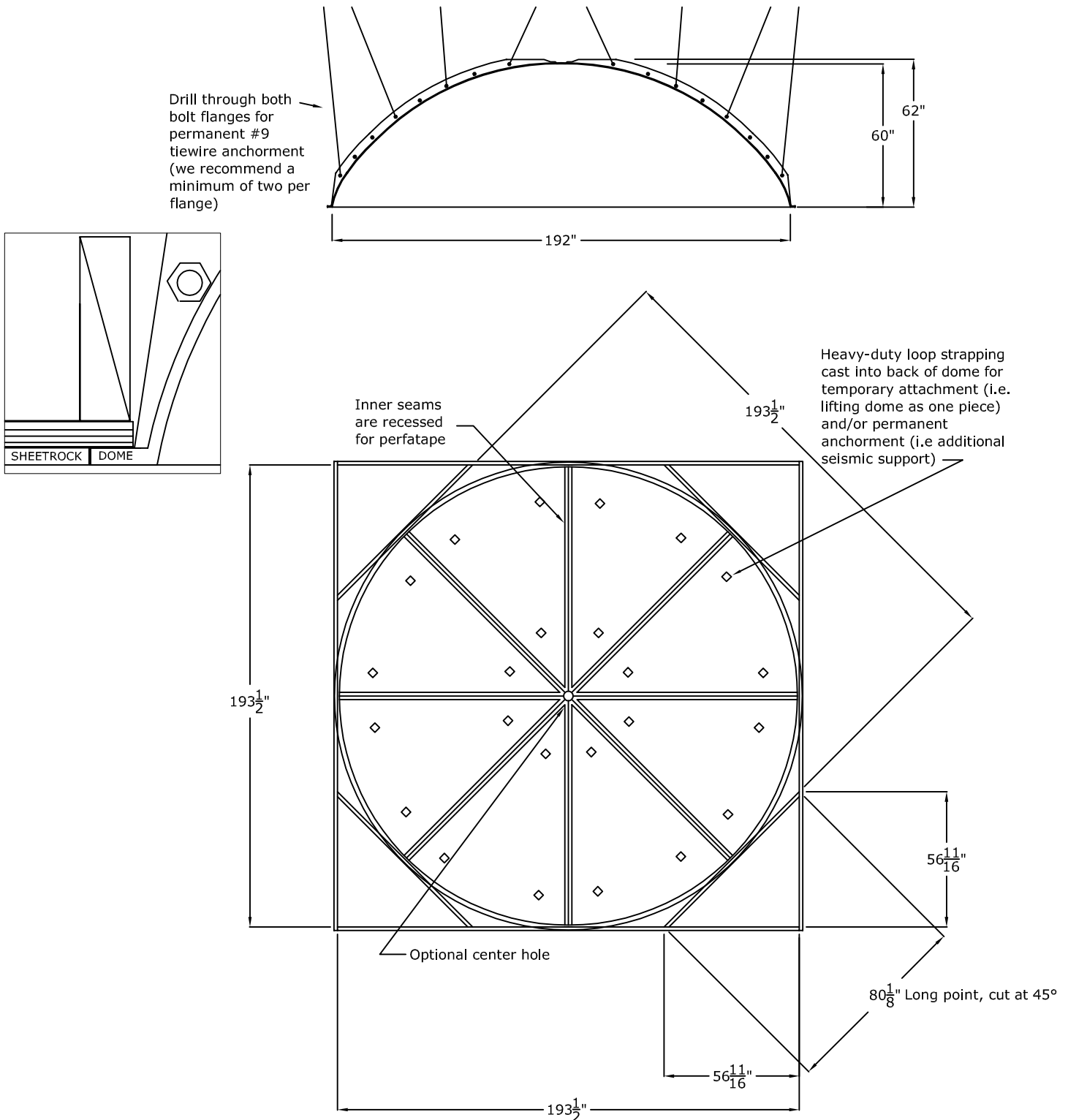
© Copyright 2018

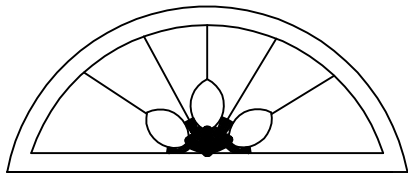
RWM Inc.

6419 South Cottonwood Street, Murray, Utah 84107
 Phone: 801-268-2400 Toll Free: 1-855-RWM-ARTS (796-2787)
 Fax: 801-268-2522 E-mail: info@rwm-inc.com

Visit our website at www.rwm-inc.com

16' Round Recessed Dome: 8 Parts with a 62" Overall Rise





RWM®

© Copyright 2018

RWM Inc.

6419 South Cottonwood Street, Murray, Utah 84107

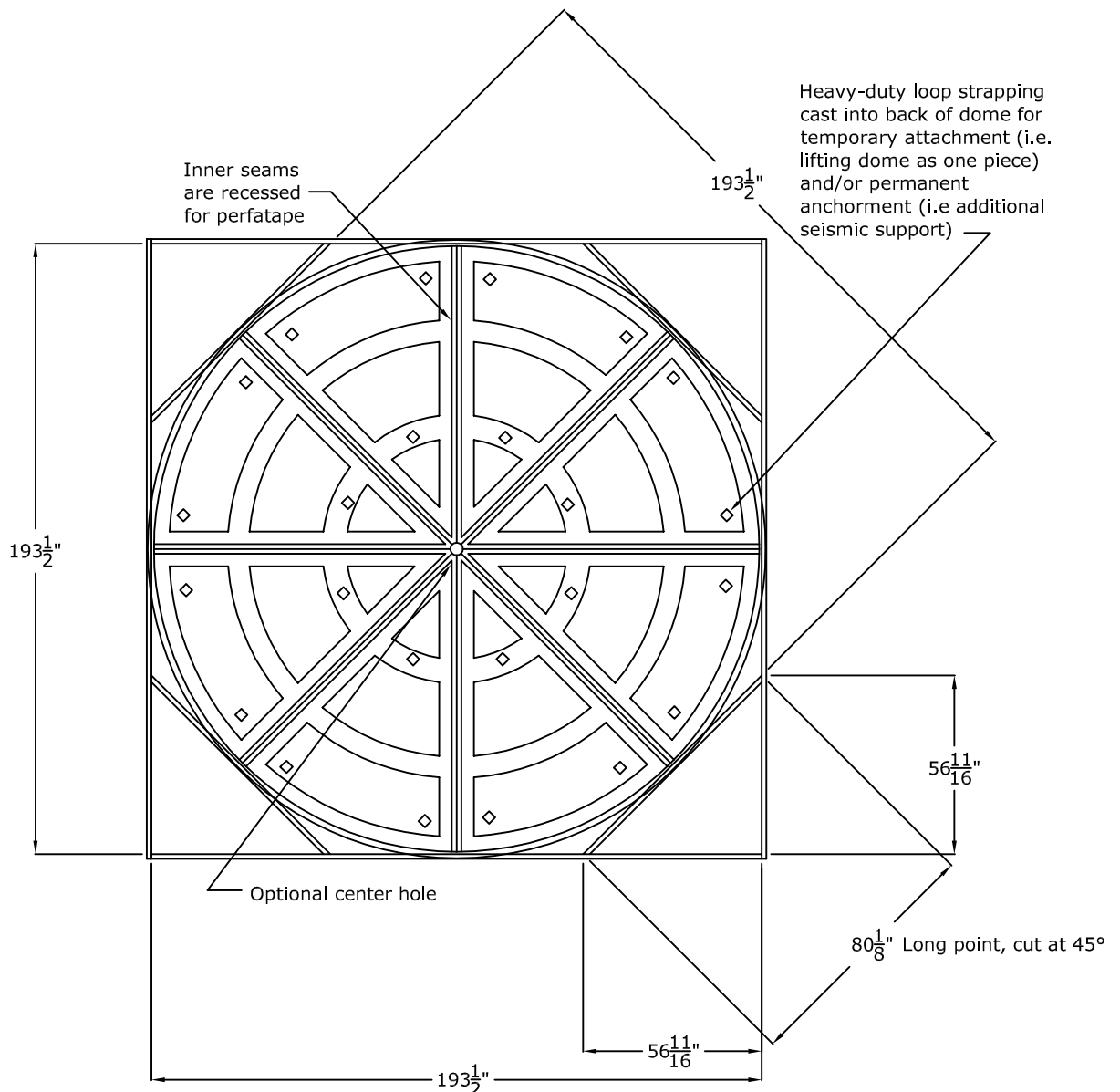
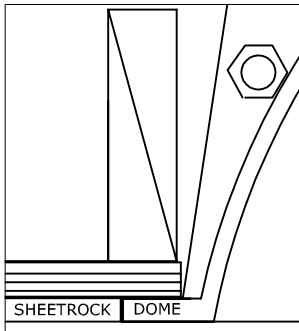
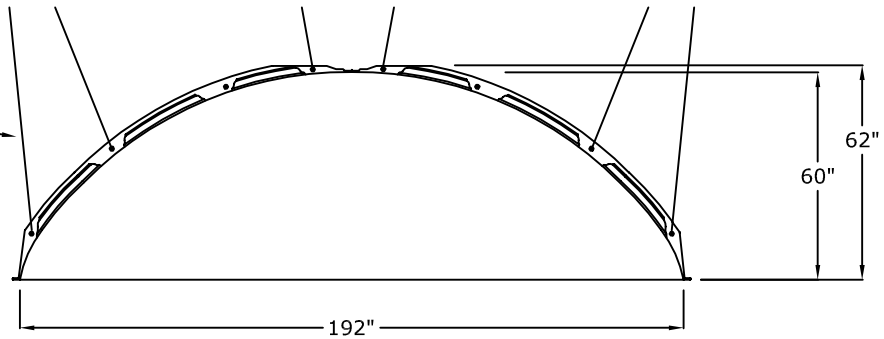
Phone: 801-268-2400 Toll Free: 1-855-RWM-ARTS (796-2787)

Fax: 801-268-2522 E-mail: info@rwm-inc.com

Visit our website at www.rwm-inc.com

16' Coffered Round Recessed Dome: 8 Parts with a 62" Overall Rise (24 Panels)

Drill through both
bolt flanges for
permanent #9
tiewire anchorment
(we recommend a
minimum of two per
flange)





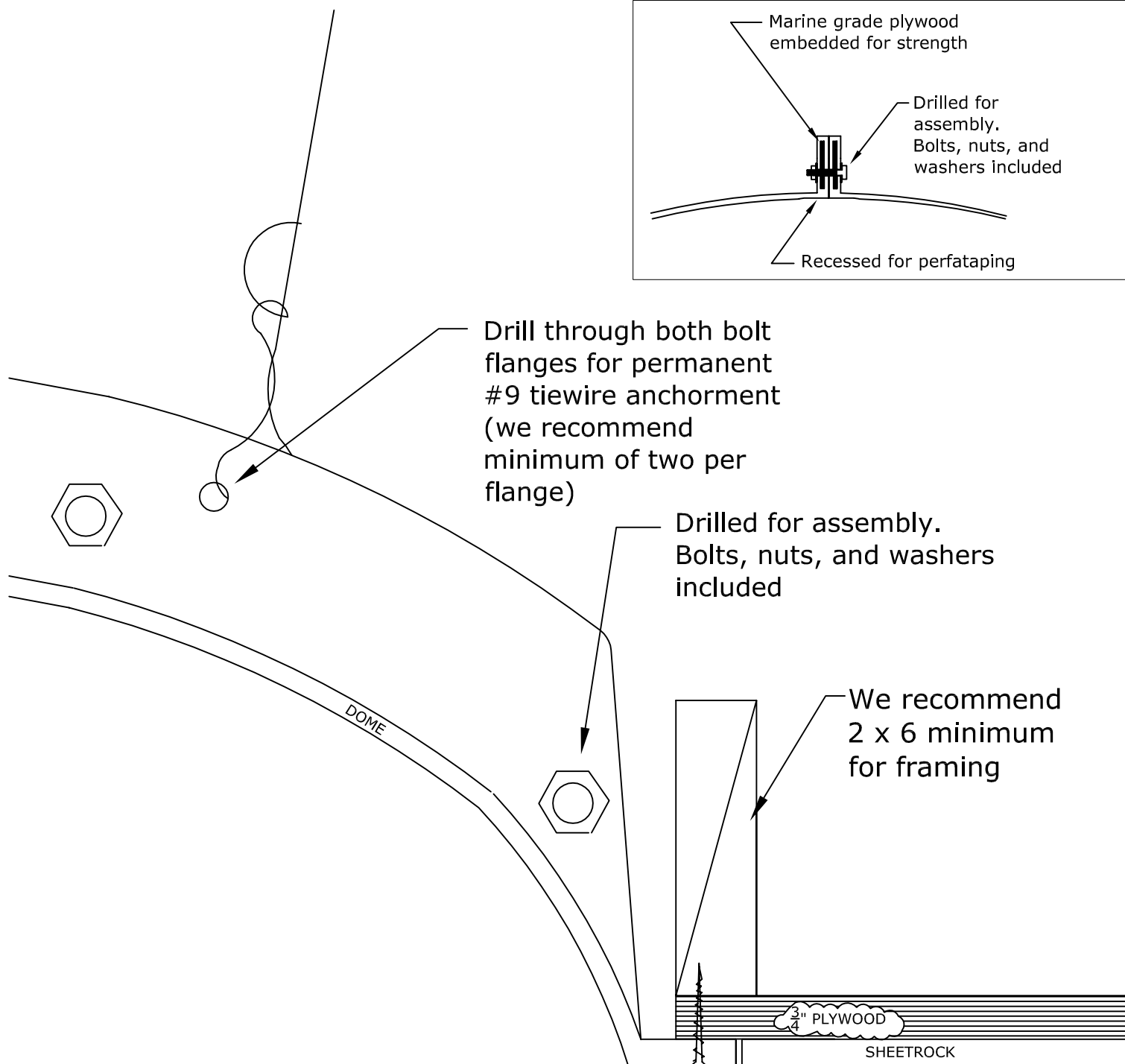
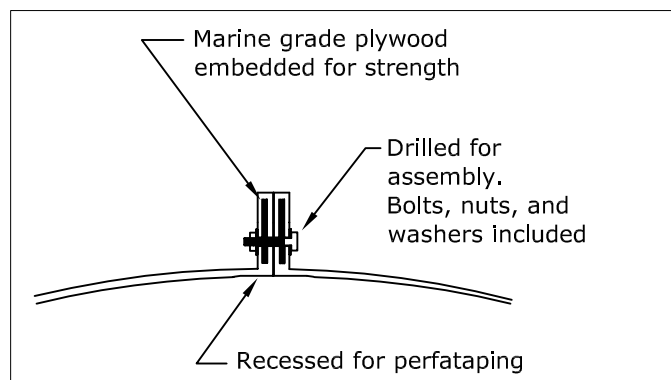
© Copyright 2018

RWM Inc.

6419 South Cottonwood Street, Murray, Utah 84107
Phone: 801-268-2400 Toll Free: 1-855-RWM-ARTS (796-2787)
Fax: 801-268-2522 E-mail: info@rwm-inc.com

Visit our website at www.rwm-inc.com

Bolt Flange Detail: Multi-Piece Domes



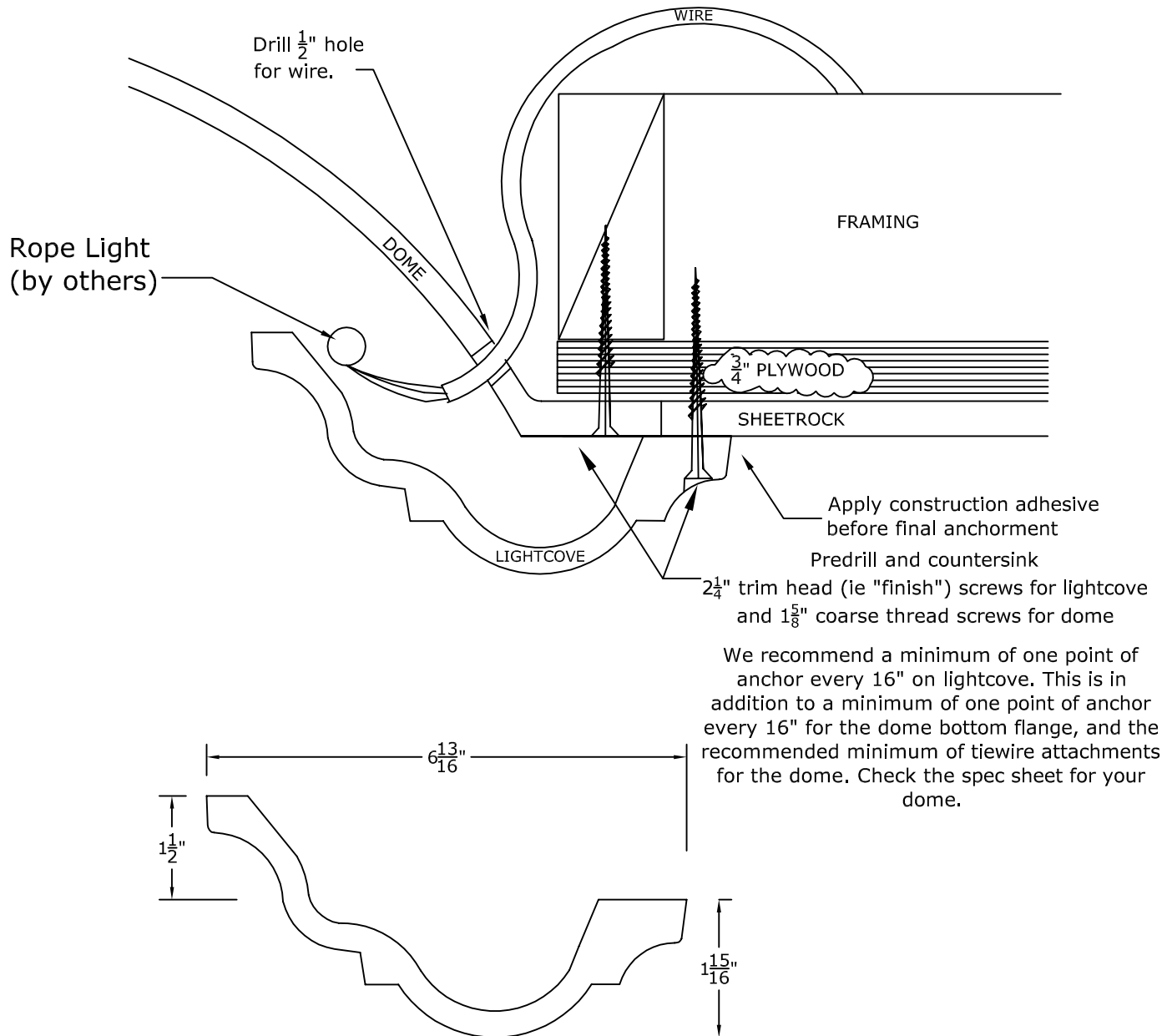


RWM Inc.

6419 South Cottonwood Street, Murray, Utah 84107
 Phone: 801-268-2400 Toll Free: 1-855-RWM-ARTS (796-2787)
 Fax: 801-268-2522 E-mail: info@rwm-inc.com

Visit our website at www.rwm-inc.com

Traditional Lightcove: For Select Larger Domes



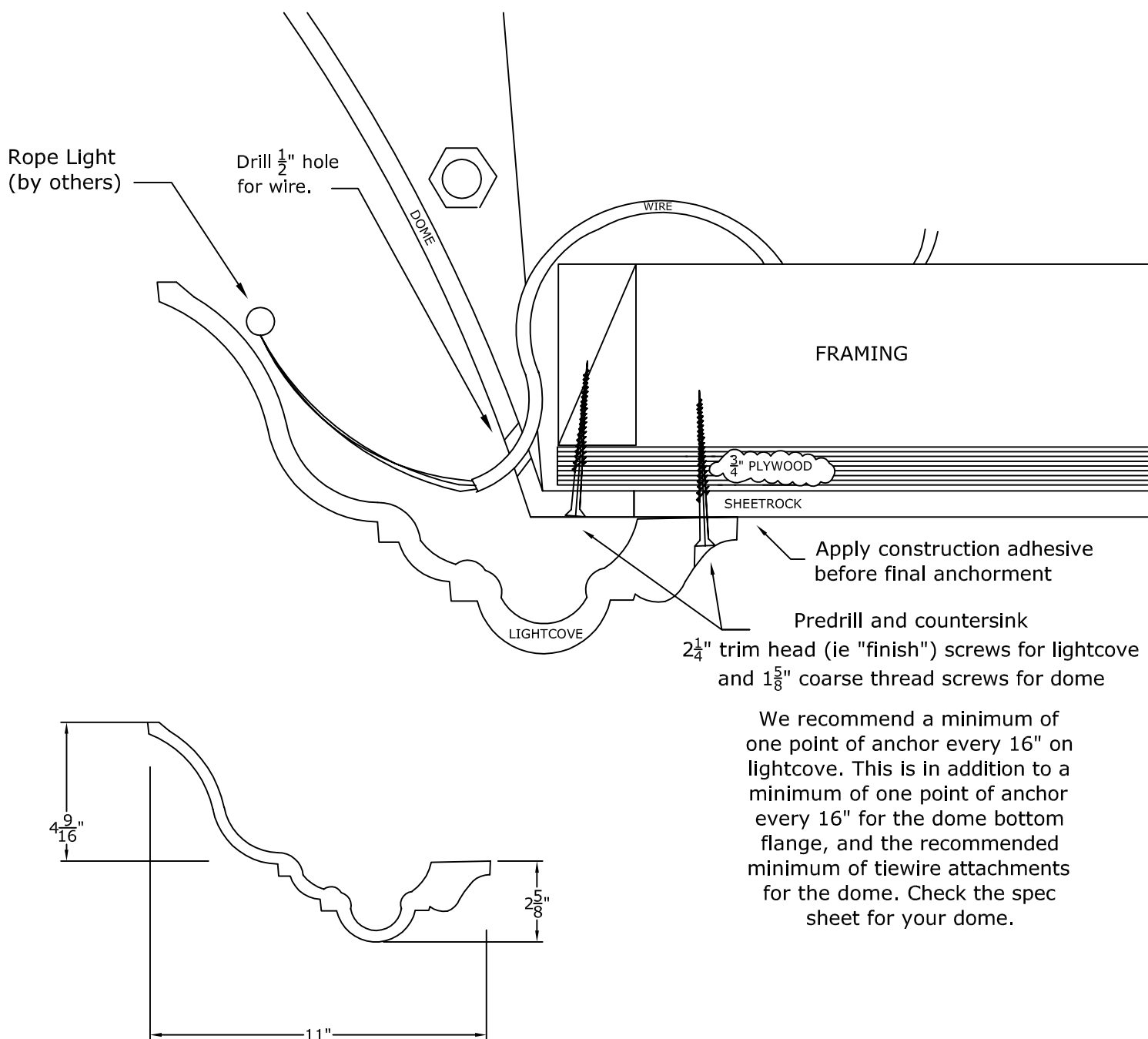


RWM Inc.

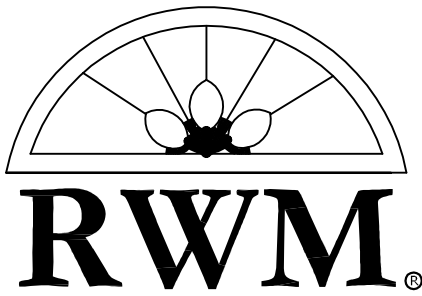
6419 South Cottonwood Street, Murray, Utah 84107
 Phone: 801-268-2400 Toll Free: 1-855-RWM-ARTS (796-2787)
 Fax: 801-268-2522 E-mail: info@rwm-inc.com

Visit our website at www.rwm-inc.com

Larger Traditional Lightcove: For Select Larger Domes



We recommend a minimum of one point of anchor every 16" on lightcove. This is in addition to a minimum of one point of anchor every 16" for the dome bottom flange, and the recommended minimum of tie wire attachments for the dome. Check the spec sheet for your dome.



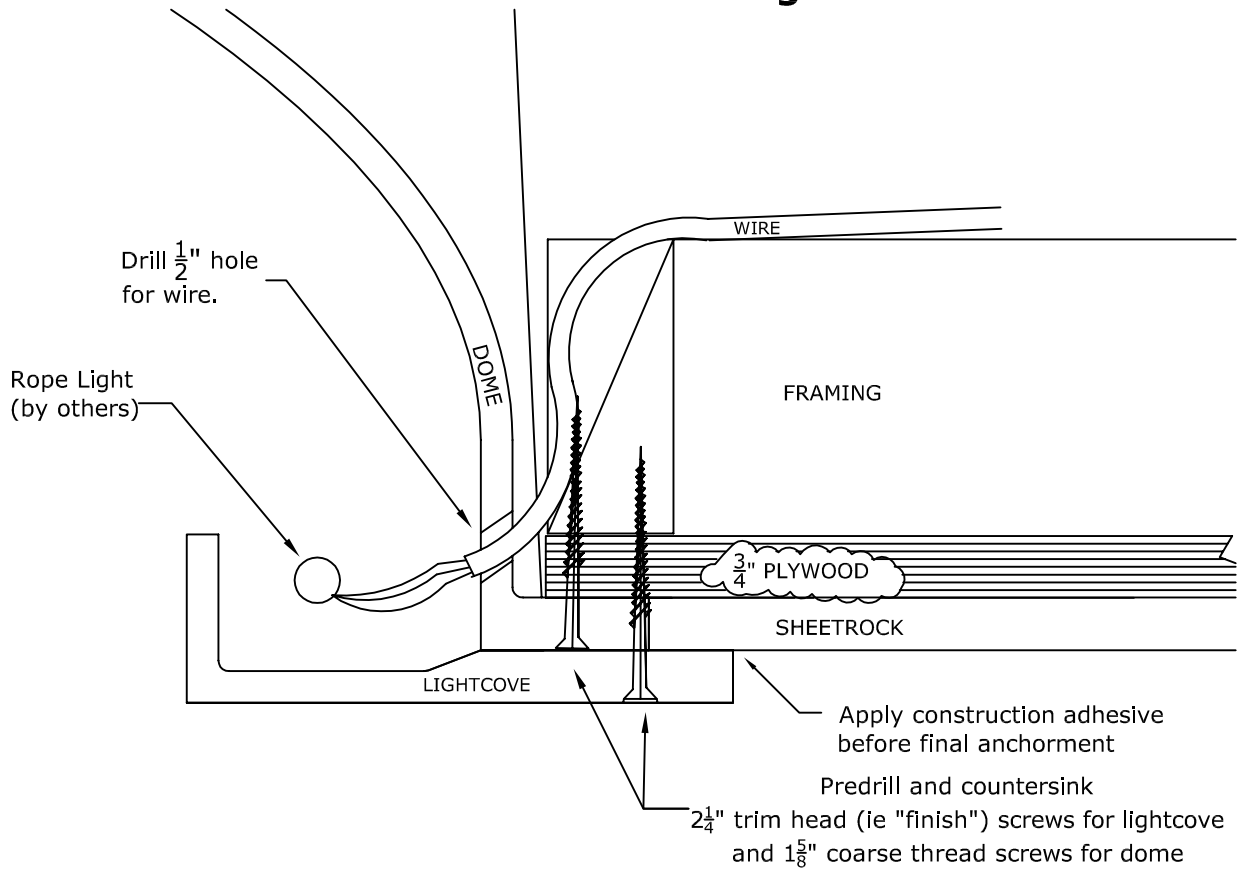
© Copyright 2018

RWM Inc.

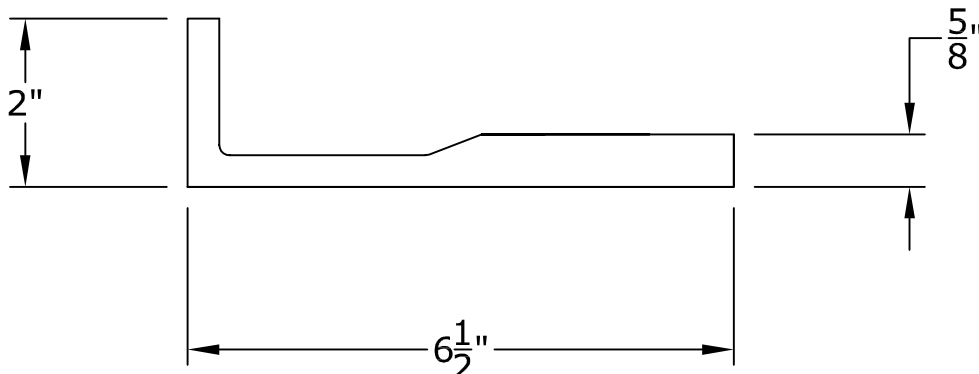
6419 South Cottonwood Street, Murray, Utah 84107
 Phone: 801-268-2400 Toll Free: 1-855-RWM-ARTS (796-2787)
 Fax: 801-268-2522 E-mail: info@rwm-inc.com

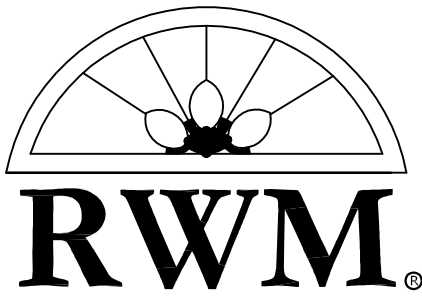
Visit our website at www.rwm-inc.com

Contemporary Lightcove: For Select Larger Domes



We recommend a minimum of one point of anchor every 16" on lightcove. This is in addition to a minimum of one point of anchor every 16" for the dome bottom flange, and the recommended minimum of tie wire attachments for the dome. Check the spec sheet for your dome.





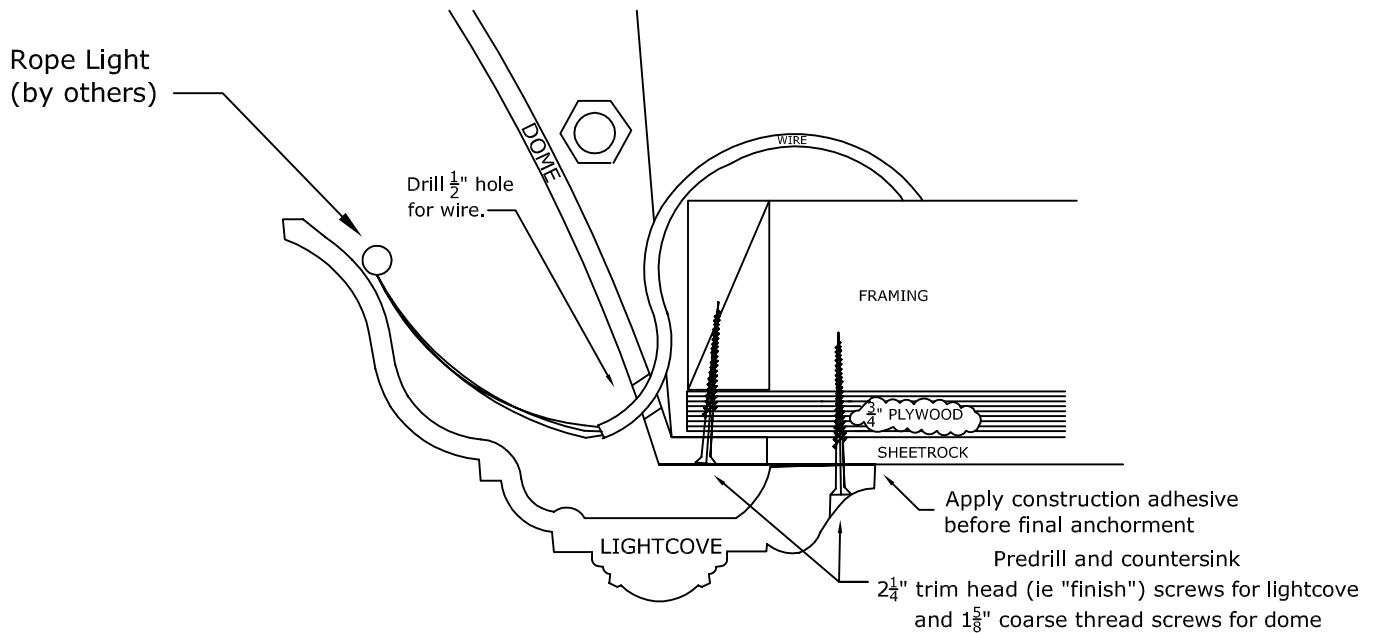
© Copyright 2018

RWM Inc.

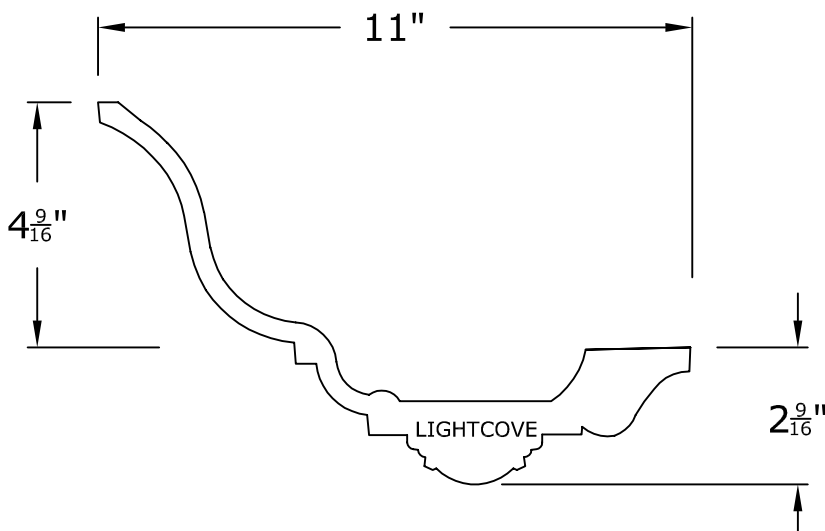
6419 South Cottonwood Street, Murray, Utah 84107
 Phone: 801-268-2400 Toll Free: 1-855-RWM-ARTS (796-2787)
 Fax: 801-268-2522 E-mail: info@rwm-inc.com

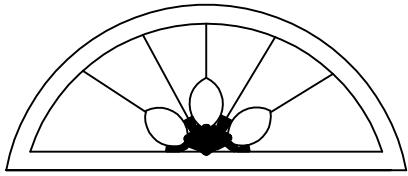
Visit our website at www.rwm-inc.com

Larger Coin Lightcove: For Select Larger Domes



We recommend a minimum of one point of anchor every 16" on lightcove. This is in addition to a minimum of one point of anchor every 16" for the dome bottom flange, and the recommended minimum of tie wire attachments for the dome. Check the spec sheet for your dome.





RWM®

© Copyright 2018

RWM Inc.

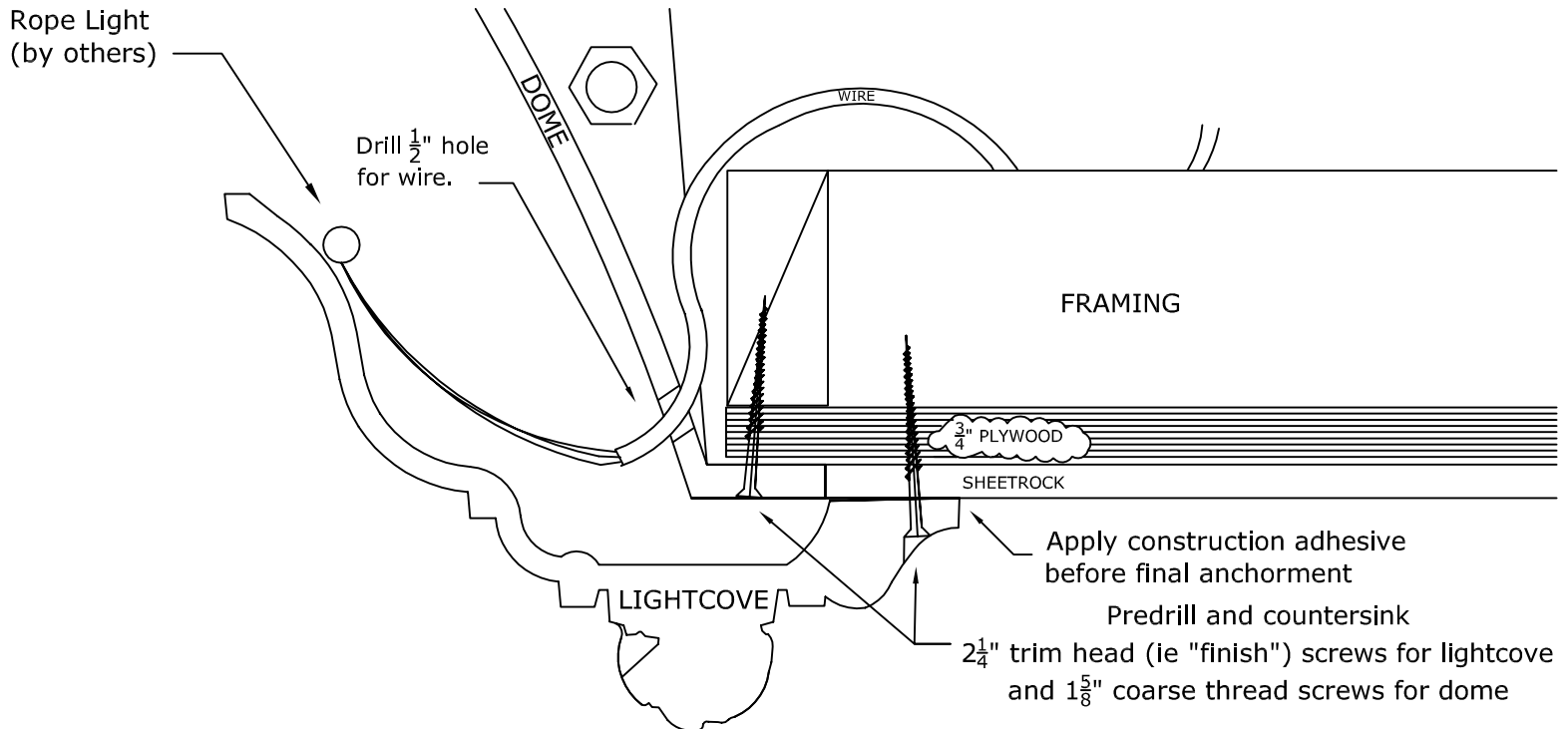
6419 South Cottonwood Street, Murray, Utah 84107

Phone: 801-268-2400 Toll Free: 1-855-RWM-ARTS (796-2787)

Fax: 801-268-2522 E-mail: info@rwm-inc.com

Visit our website at www.rwm-inc.com

Larger Acanthus & Pearl Lightcove: For Select Larger Domes



We recommend a minimum of one point of anchor every 16" on lightcove. This is in addition to a minimum of one point of anchor every 16" for the dome bottom flange, and the recommended minimum of tiewire attachments for the dome. Check the spec sheet for your dome.

