



© Copyright 2018

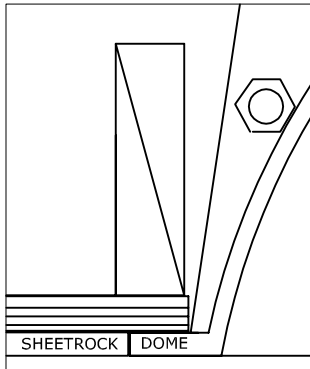
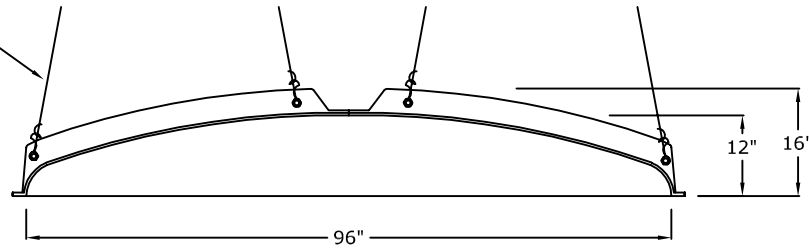
RWM Inc.

6419 South Cottonwood Street, Murray, Utah 84107
 Phone: 801-268-2400 Toll Free: 1-855-RWM-ARTS (796-2787)
 Fax: 801-268-2522 E-mail: info@rwm-inc.com

Visit our website at www.rwm-inc.com

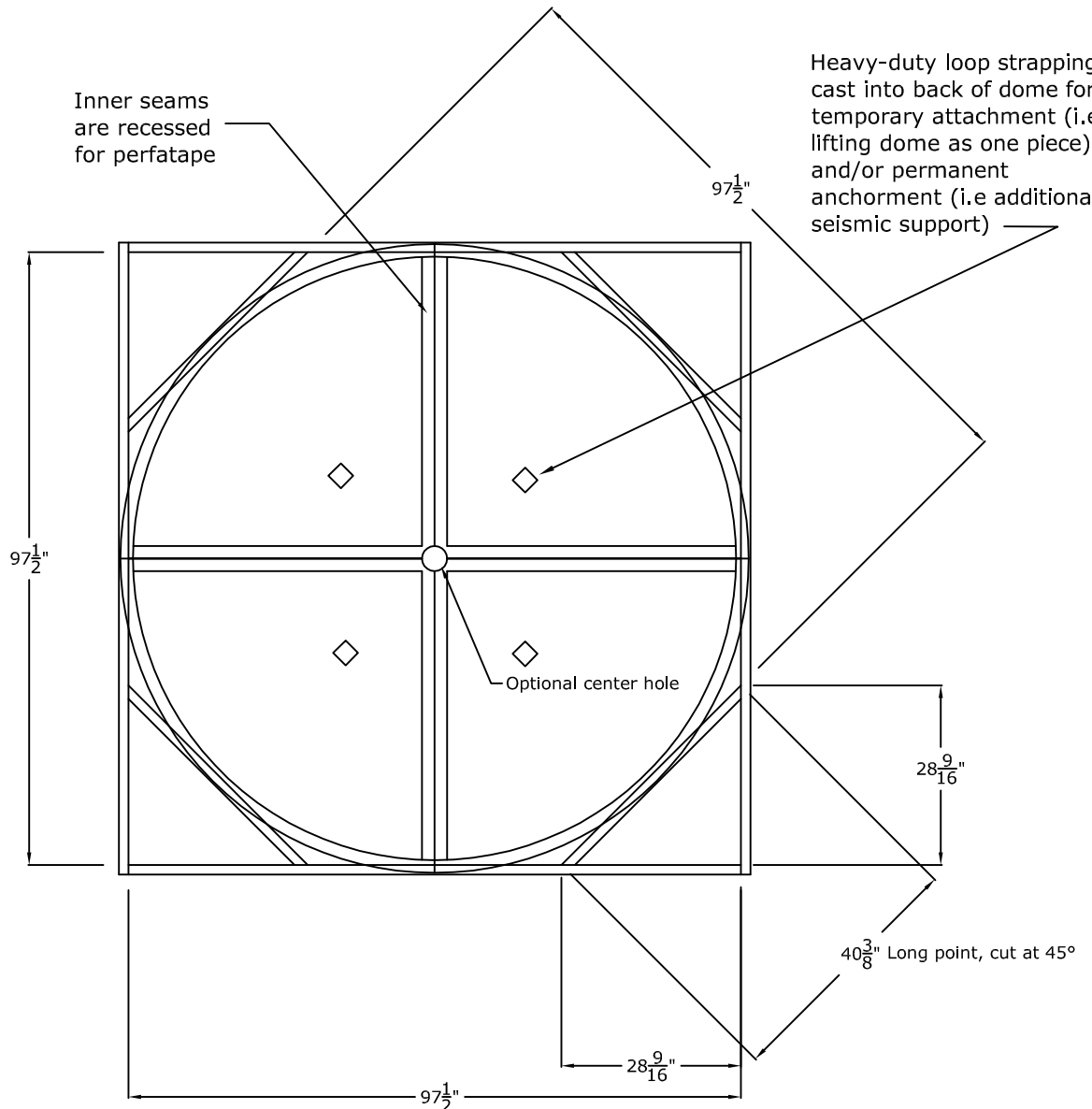
8 Foot Round Recessed Dome: 4 Parts with a 16" Overall Rise

Drill through both bolt
 flanges for permanent
 #9 tiewire
 anchorment
 (we recommend a
 minimum of two per
 flange)



Inner seams
 are recessed
 for perfatape

Heavy-duty loop strapping
 cast into back of dome for
 temporary attachment (i.e.
 lifting dome as one piece)
 and/or permanent
 anchorment (i.e additional
 seismic support)





© Copyright 2018

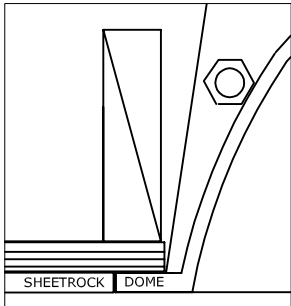
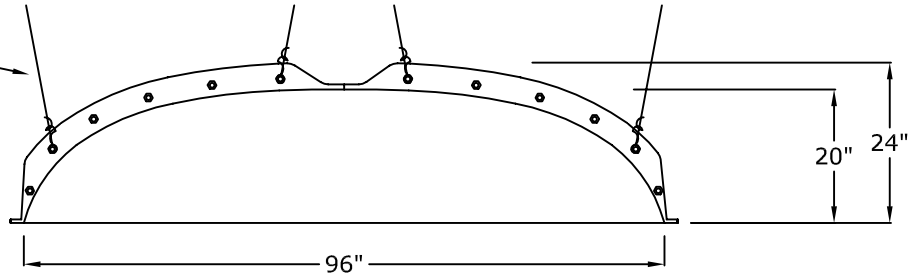
RWM Inc.

6419 South Cottonwood Street, Murray, Utah 84107
 Phone: 801-268-2400 Toll Free: 1-855-RWM-ARTS (796-2787)
 Fax: 801-268-2522 E-mail: info@rwm-inc.com

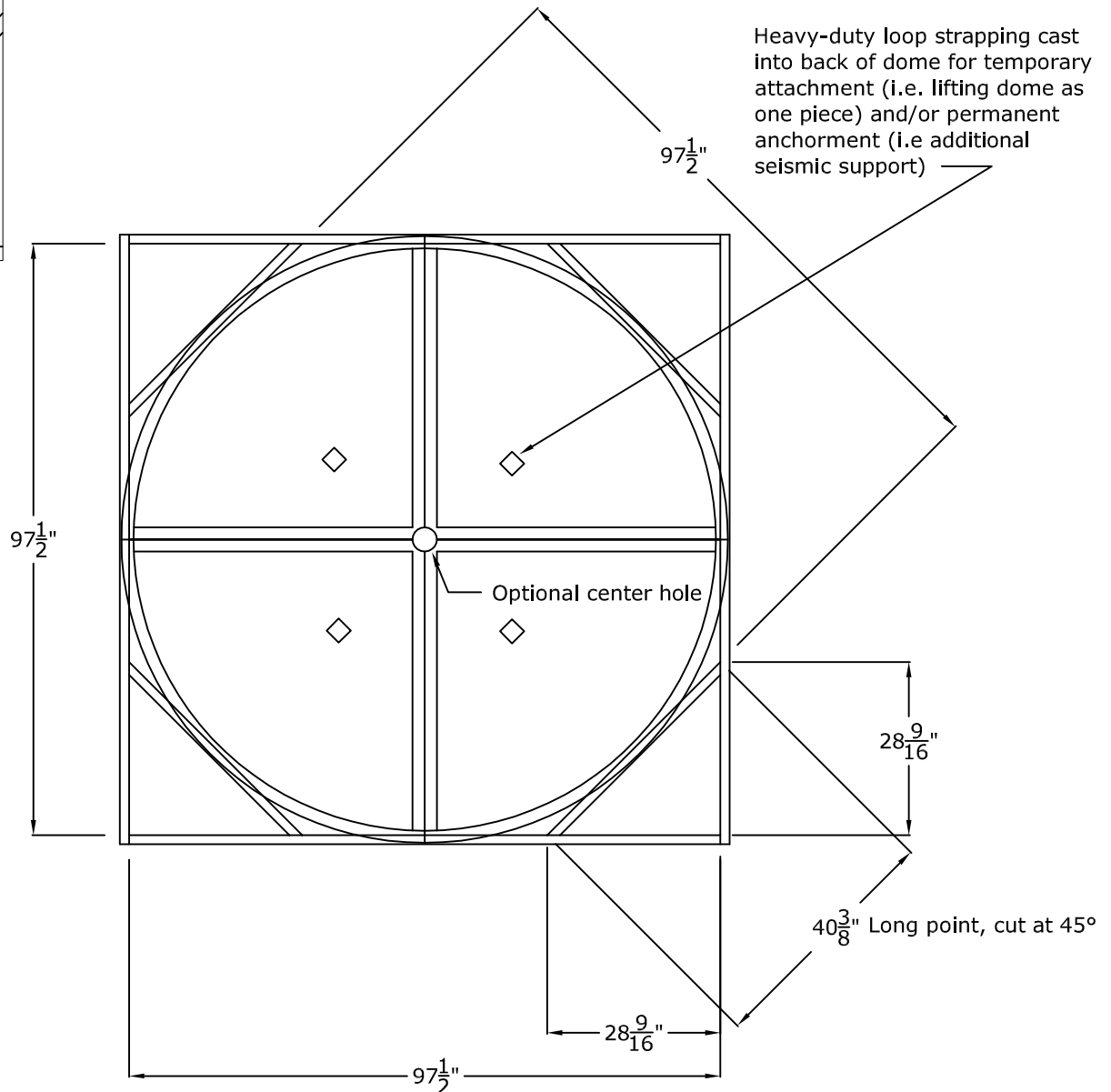
Visit our website at www.rwm-inc.com

8' Round Recessed Dome: 4 Parts with a 24" Overall Rise

Drill through both bolt
flanges for permanent
#9 tiewire
anchorment
(we recommend a
minimum of two per
flange)



Heavy-duty loop strapping cast
into back of dome for temporary
attachment (i.e. lifting dome as
one piece) and/or permanent
anchorment (i.e. additional
seismic support)





© Copyright 2018

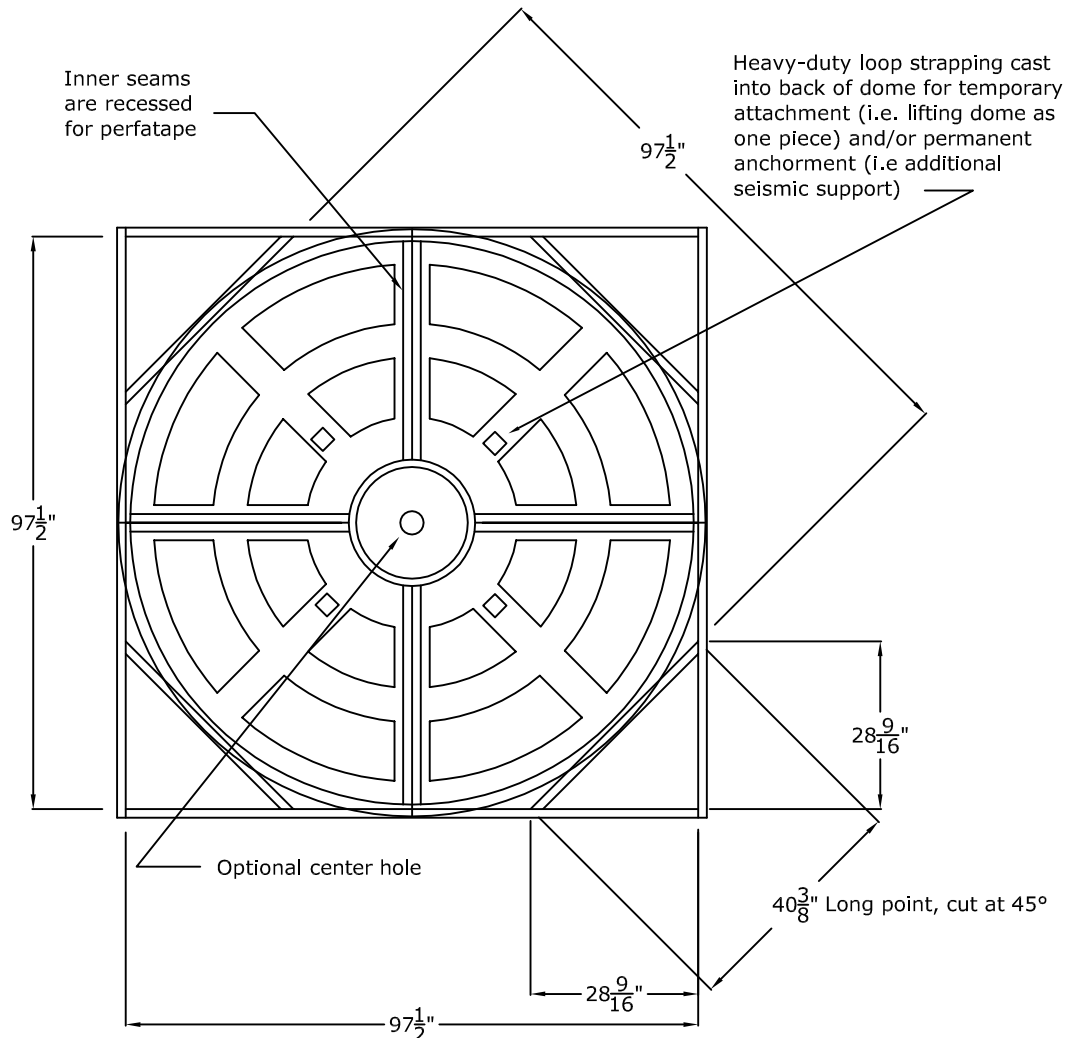
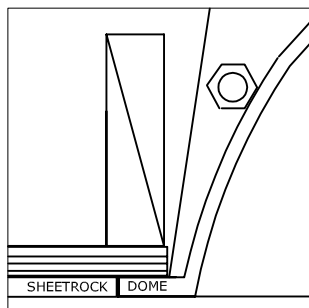
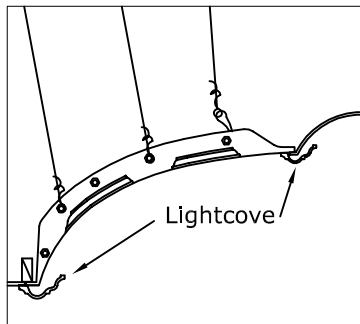
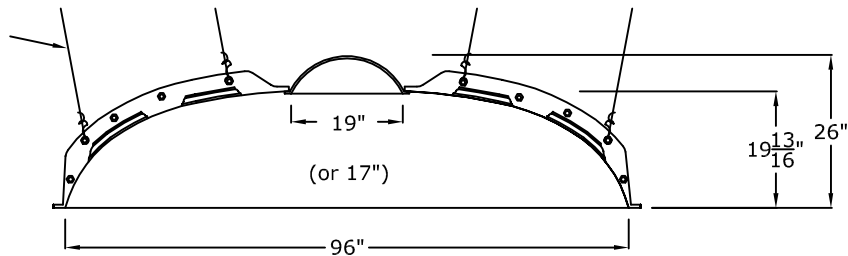
RWM Inc.

6419 South Cottonwood Street, Murray, Utah 84107
 Phone: 801-268-2400 Toll Free: 1-855-RWM-ARTS (796-2787)
 Fax: 801-268-2522 E-mail: info@rwm-inc.com

Visit our website at www.rwm-inc.com

8' Coffered Round Recessed Dome: 4 Parts with a 26" Overall Rise (16 Panels) With 19" Top Dome & Lightcove

Drill through both bolt
 flanges for permanent
 #9 tiewire
 anchorment
 (we recommend a
 minimum of two per
 flange)





© Copyright 2022

RWM Inc.

6419 South Cottonwood Street, Murray, Utah 84107

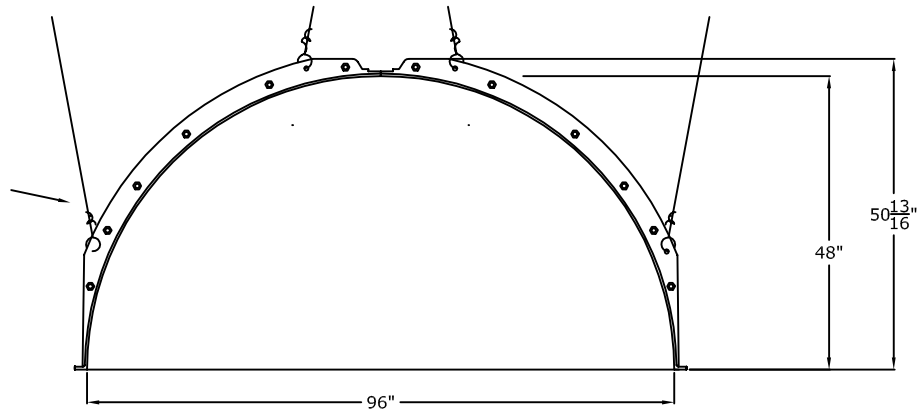
Phone: 801-268-2400 Fax: 801-268-2522

E-mail: info@rwm-inc.com

Visit our website at www.rwm-inc.com

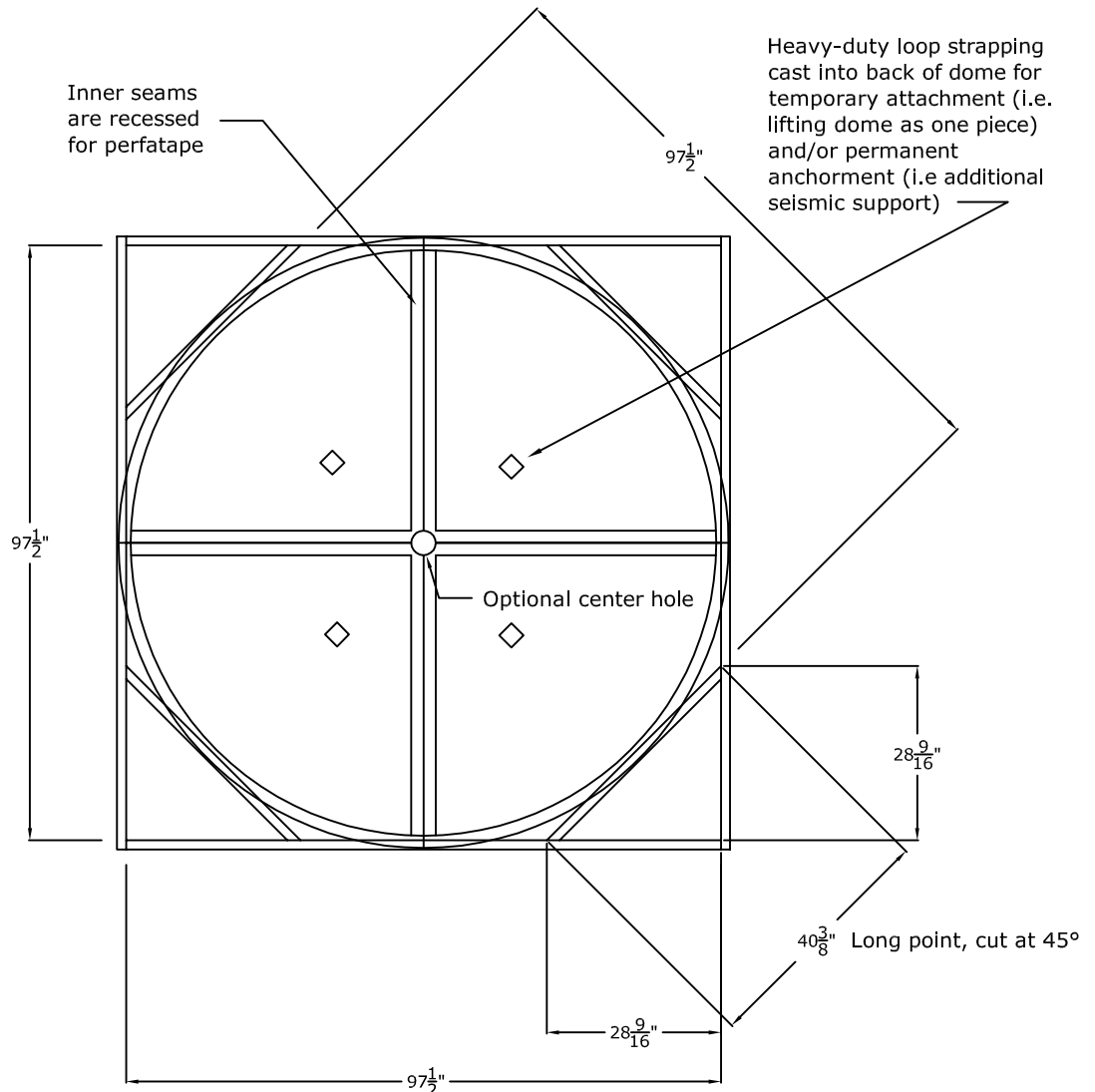
8' Round Recessed Dome: 4 Parts with a 48" Inner Rise

Drill through both bolt flanges for permanent #9 tiewire anchorment (we recommend a minimum of two per flange)



Inner seams are recessed for perfatape

Heavy-duty loop strapping cast into back of dome for temporary attachment (i.e. lifting dome as one piece) and/or permanent anchorment (i.e additional seismic support)





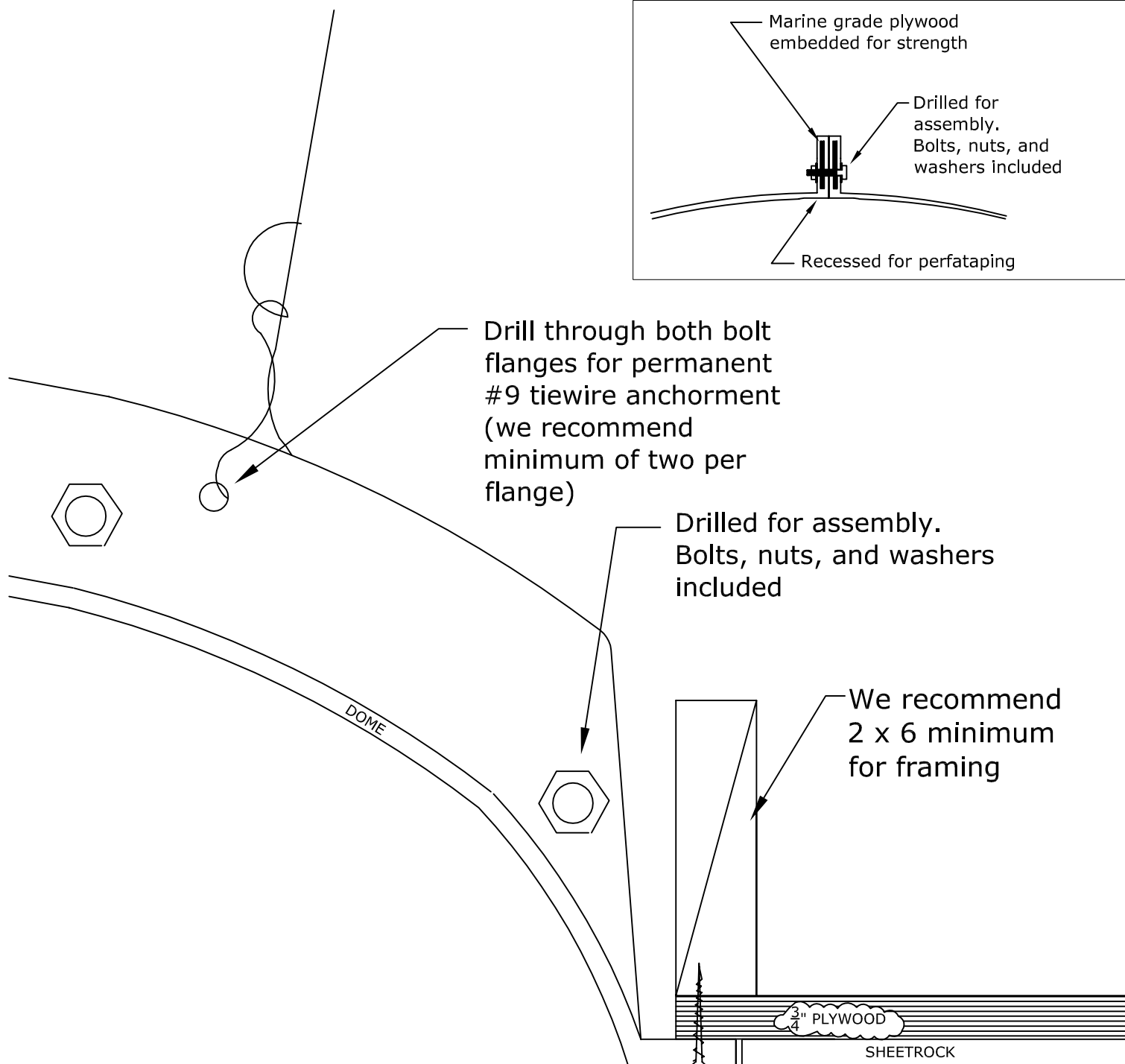
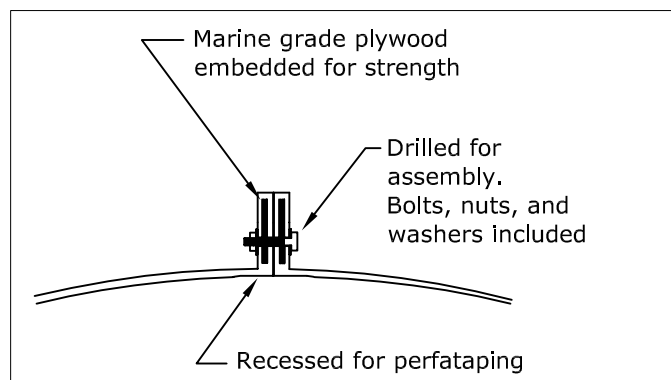
© Copyright 2018

RWM Inc.

6419 South Cottonwood Street, Murray, Utah 84107
Phone: 801-268-2400 Toll Free: 1-855-RWM-ARTS (796-2787)
Fax: 801-268-2522 E-mail: info@rwm-inc.com

Visit our website at www.rwm-inc.com

Bolt Flange Detail: Multi-Piece Domes



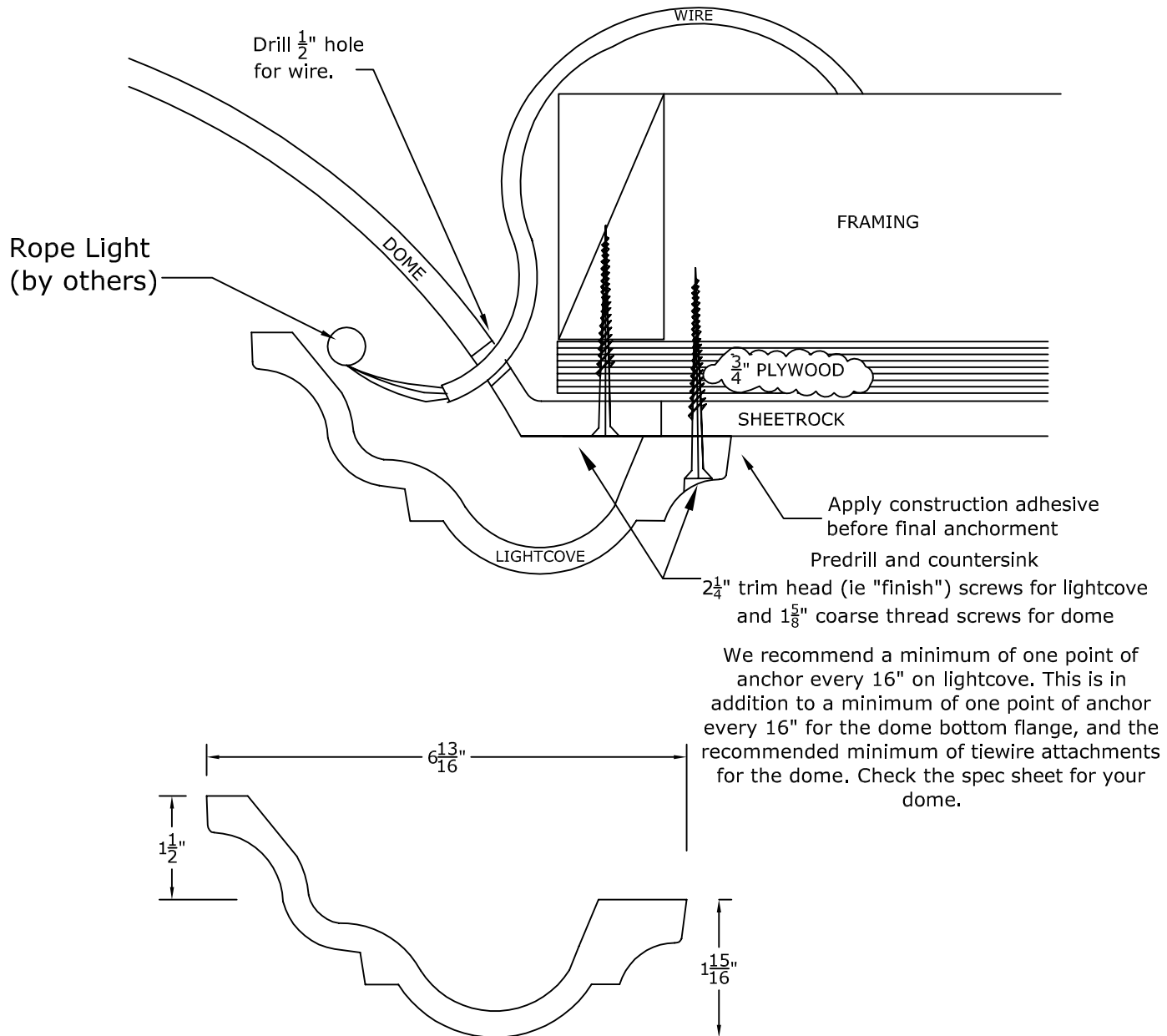


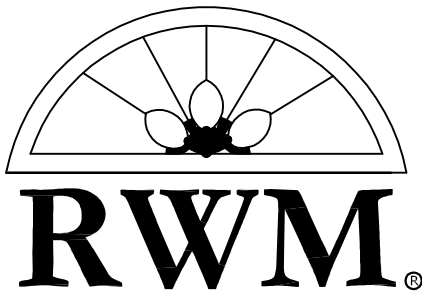
RWM Inc.

6419 South Cottonwood Street, Murray, Utah 84107
 Phone: 801-268-2400 Toll Free: 1-855-RWM-ARTS (796-2787)
 Fax: 801-268-2522 E-mail: info@rwm-inc.com

Visit our website at www.rwm-inc.com

Traditional Lightcove: For Select Larger Domes





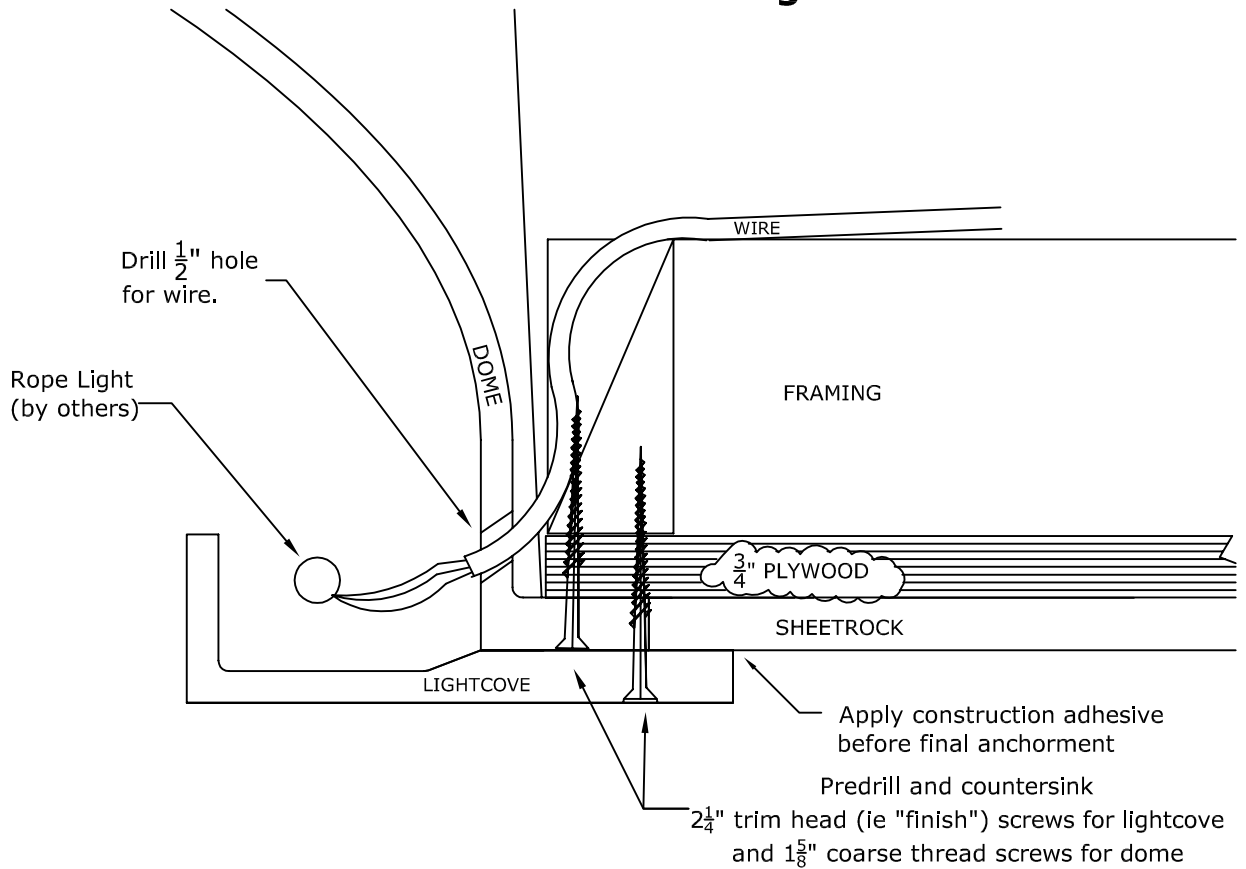
© Copyright 2018

RWM Inc.

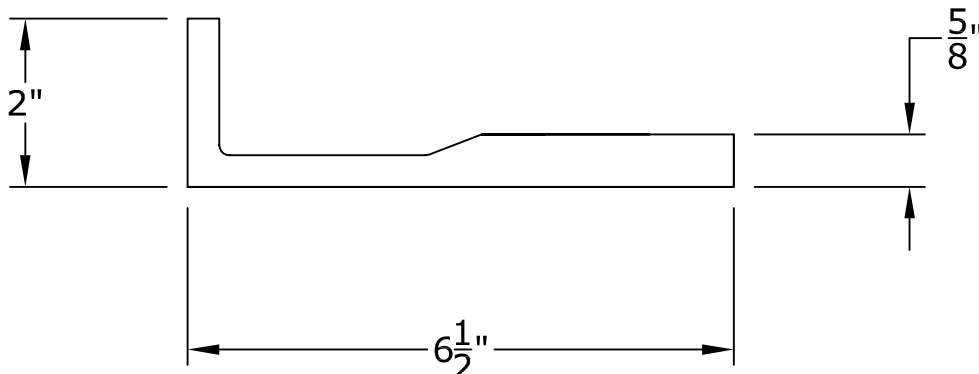
6419 South Cottonwood Street, Murray, Utah 84107
 Phone: 801-268-2400 Toll Free: 1-855-RWM-ARTS (796-2787)
 Fax: 801-268-2522 E-mail: info@rwm-inc.com

Visit our website at www.rwm-inc.com

Contemporary Lightcove: For Select Larger Domes



We recommend a minimum of one point of anchor every 16" on lightcove. This is in addition to a minimum of one point of anchor every 16" for the dome bottom flange, and the recommended minimum of tie wire attachments for the dome. Check the spec sheet for your dome.





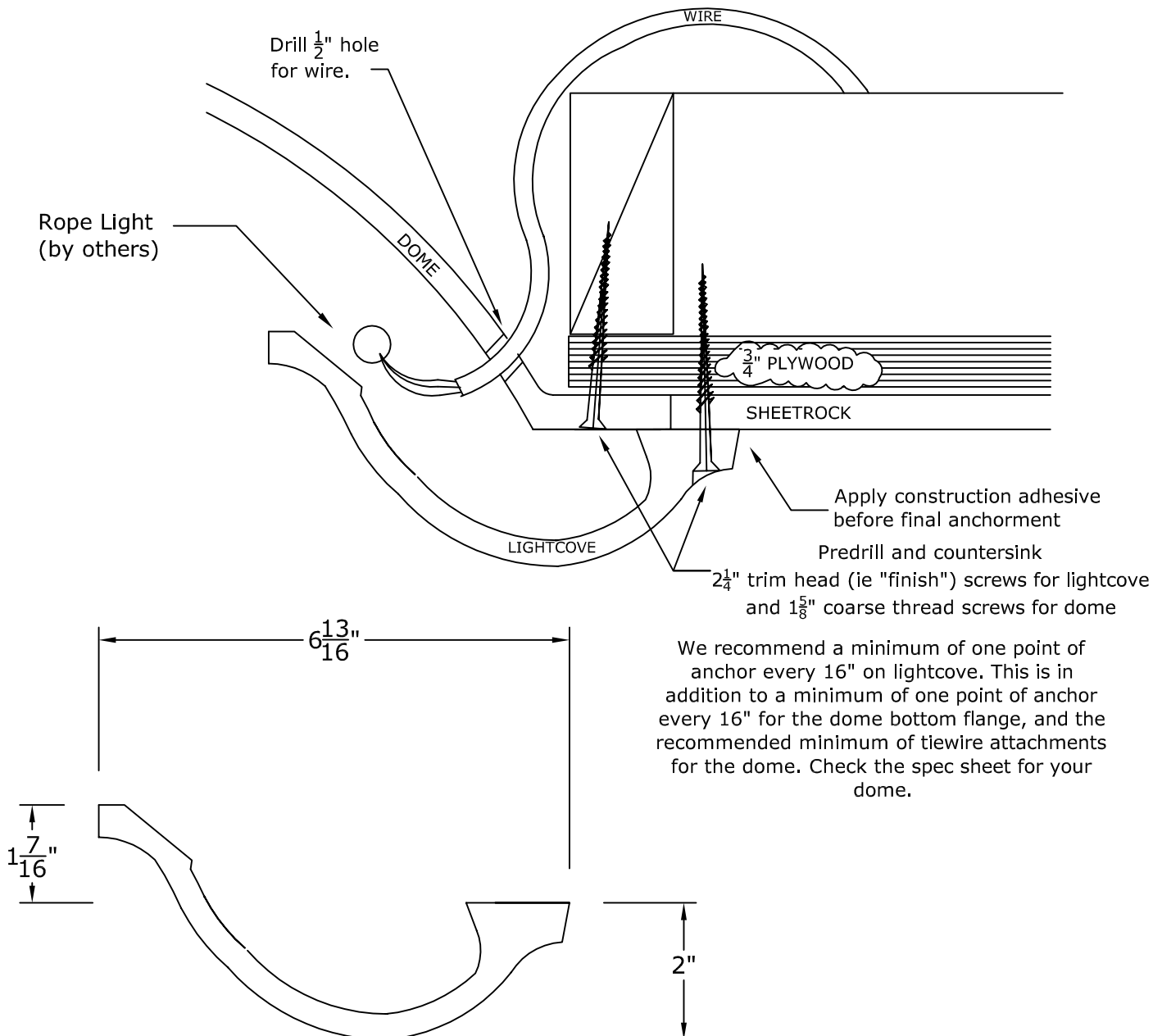
© Copyright 2018

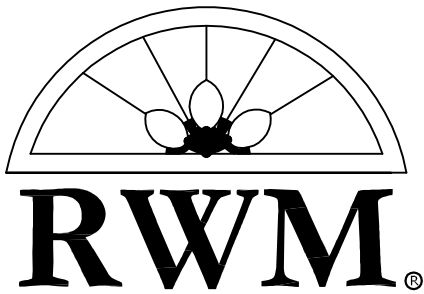
RWM Inc.

6419 South Cottonwood Street, Murray, Utah 84107
 Phone: 801-268-2400 Toll Free: 1-855-RWM-ARTS (796-2787)
 Fax: 801-268-2522 E-mail: info@rwm-inc.com

Visit our website at www.rwm-inc.com

Bullnose Lightcove: For Select Larger Domes





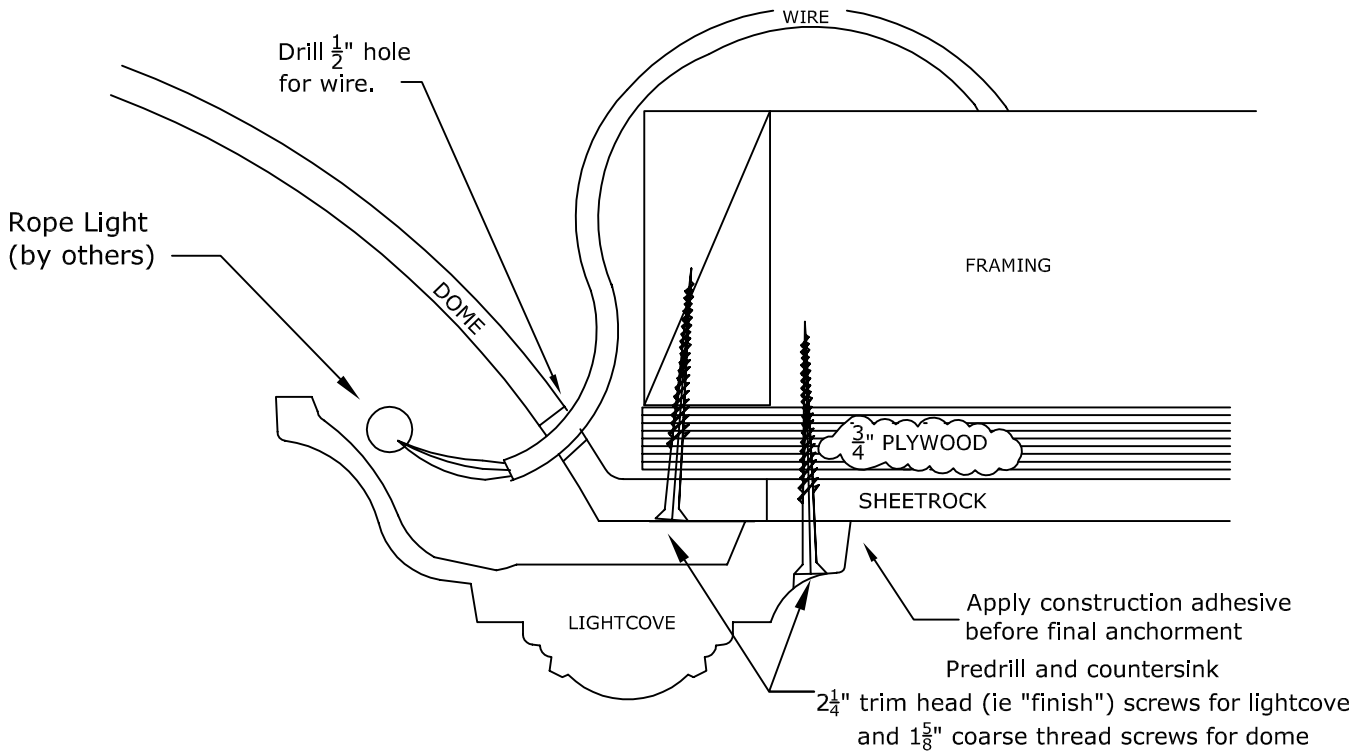
© Copyright 2018

RWM Inc.

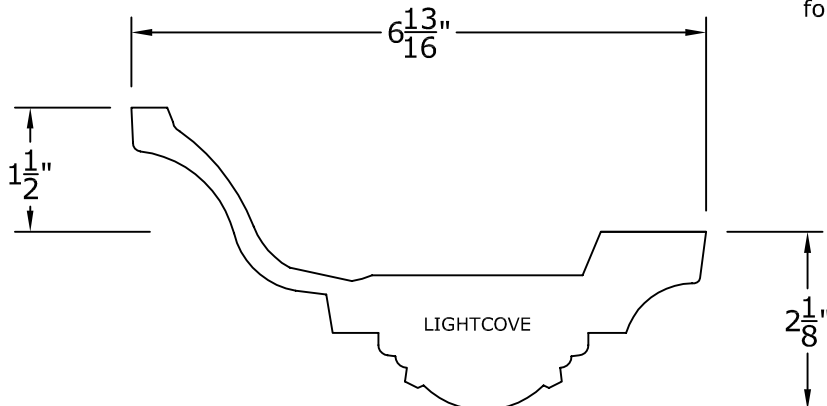
6419 South Cottonwood Street, Murray, Utah 84107
 Phone: 801-268-2400 Toll Free: 1-855-RWM-ARTS (796-2787)
 Fax: 801-268-2522 E-mail: info@rwm-inc.com

Visit our website at www.rwm-inc.com

Coin Lightcove: For Select Larger Domes



We recommend a minimum of one point of anchor every 16" on lightcove. This is in addition to a minimum of one point of anchor every 16" for the dome bottom flange, and the recommended minimum of tie wire attachments for the dome. Check the spec sheet for your dome.

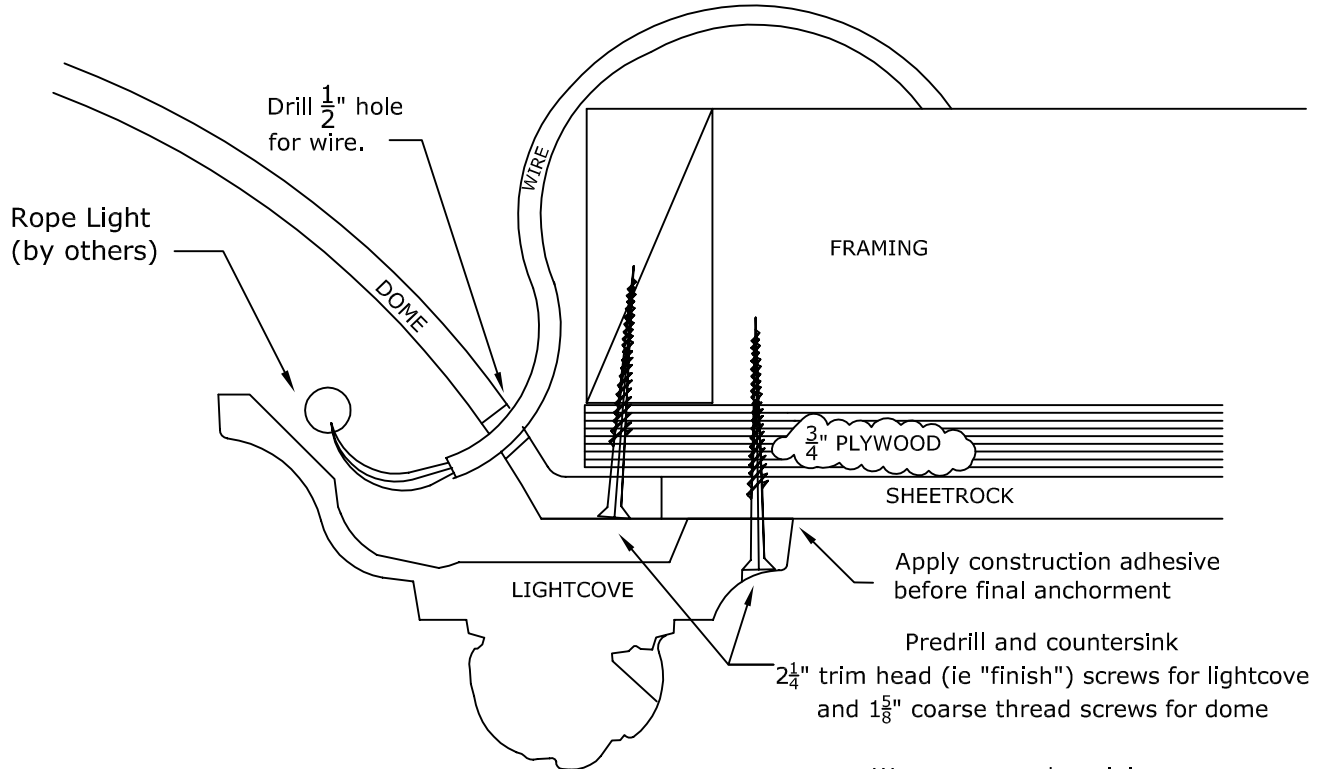




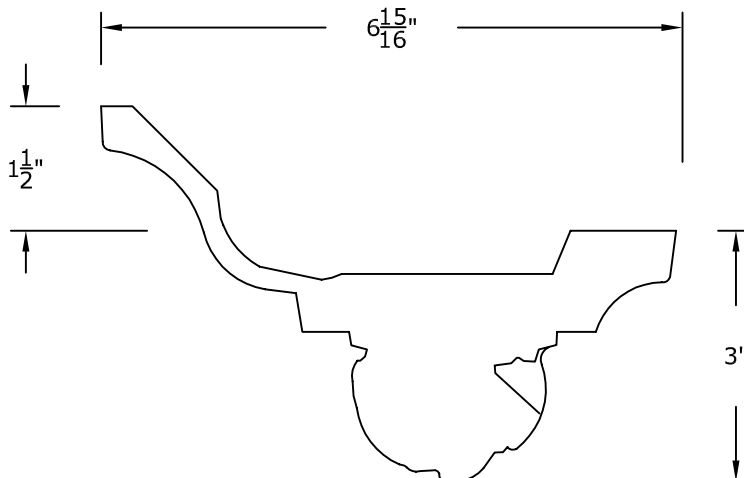
RWM Inc.

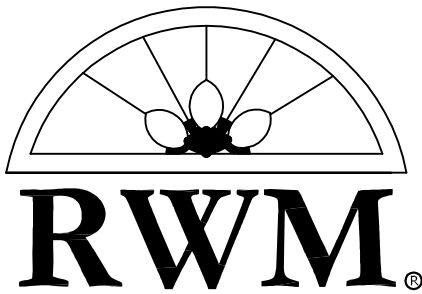
6419 South Cottonwood Street, Murray, Utah 84107
 Phone: 801-268-2400 Toll Free: 1-855-RWM-ARTS (796-2787)
 Fax: 801-268-2522 E-mail: info@rwm-inc.com
 Visit our website at www.rwm-inc.com

Acanthus & Pearl Lightcove: For Select Larger Domes



We recommend a minimum of one point of anchor every 16" on lightcove. This is in addition to a minimum of one point of anchor every 16" for the dome bottom flange, and the recommended minimum of tiewire attachments for the dome. Check the spec sheet for your dome.





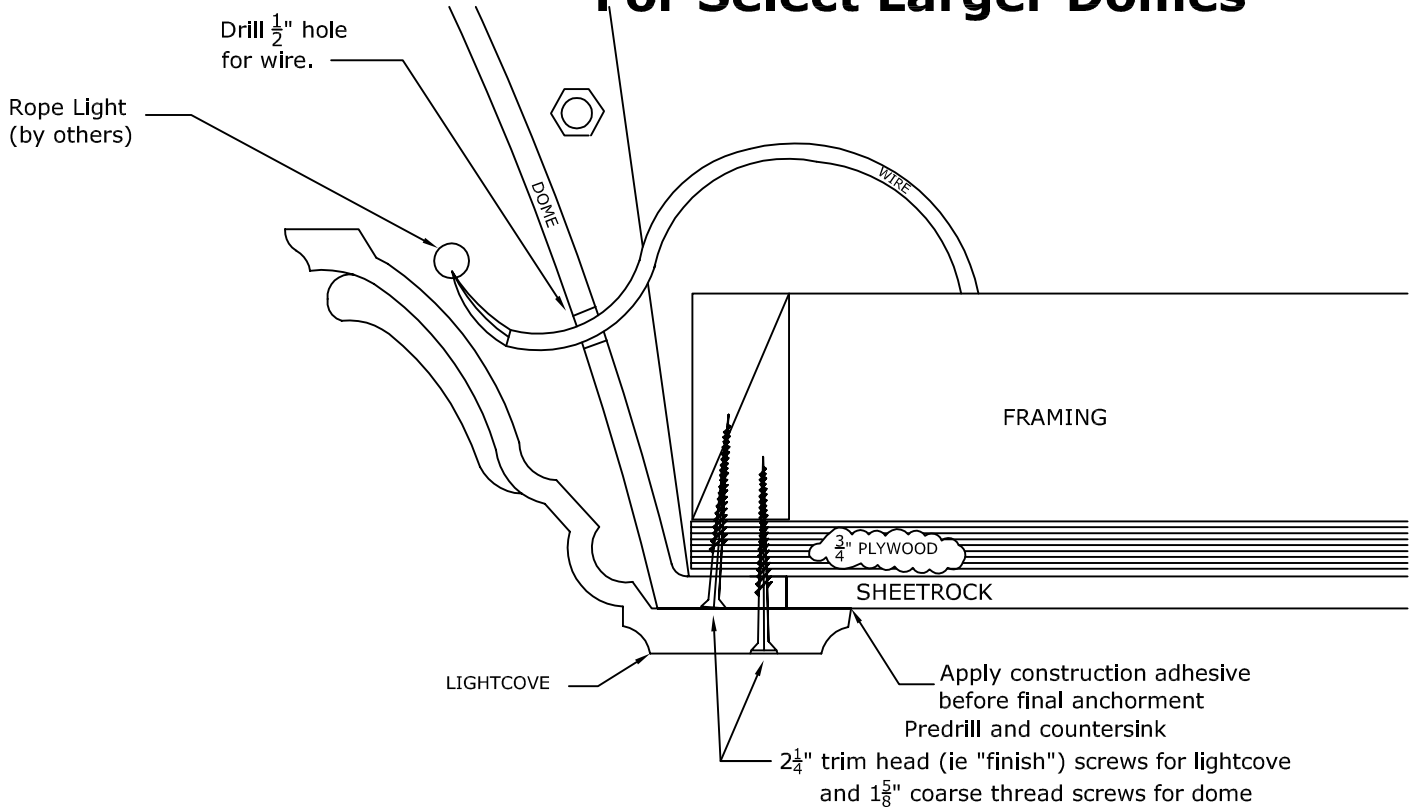
© Copyright 2018

RWM Inc.

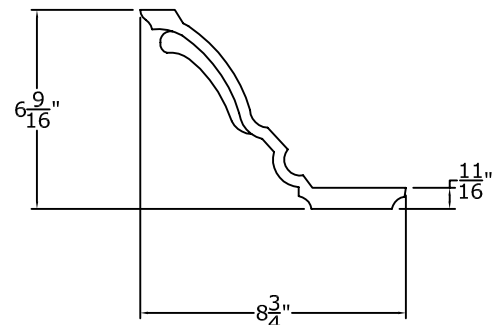
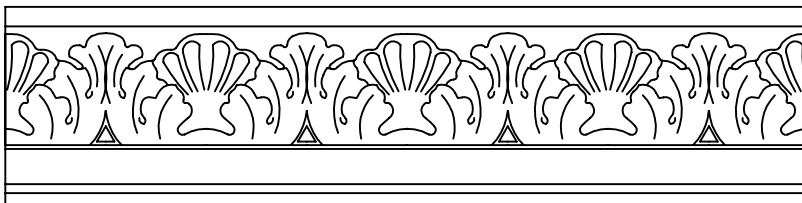
6419 South Cottonwood Street, Murray, Utah 84107
 Phone: 801-268-2400 Toll Free: 1-855-RWM-ARTS (796-2787)
 Fax: 801-268-2522 E-mail: info@rwm-inc.com

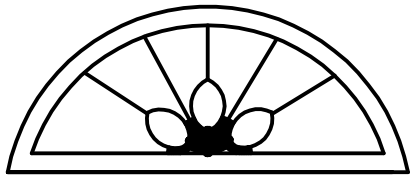
Visit our website at www.rwm-inc.com

Acanthus Leaf Lightcove: For Select Larger Domes



We recommend a minimum of one point of anchor every 16" on lightcove. This is in addition to a minimum of one point of anchor every 16" for the dome bottom flange, and the recommended minimum of tie wire attachments for the dome.
 Check the spec sheet for your dome.





RWM®

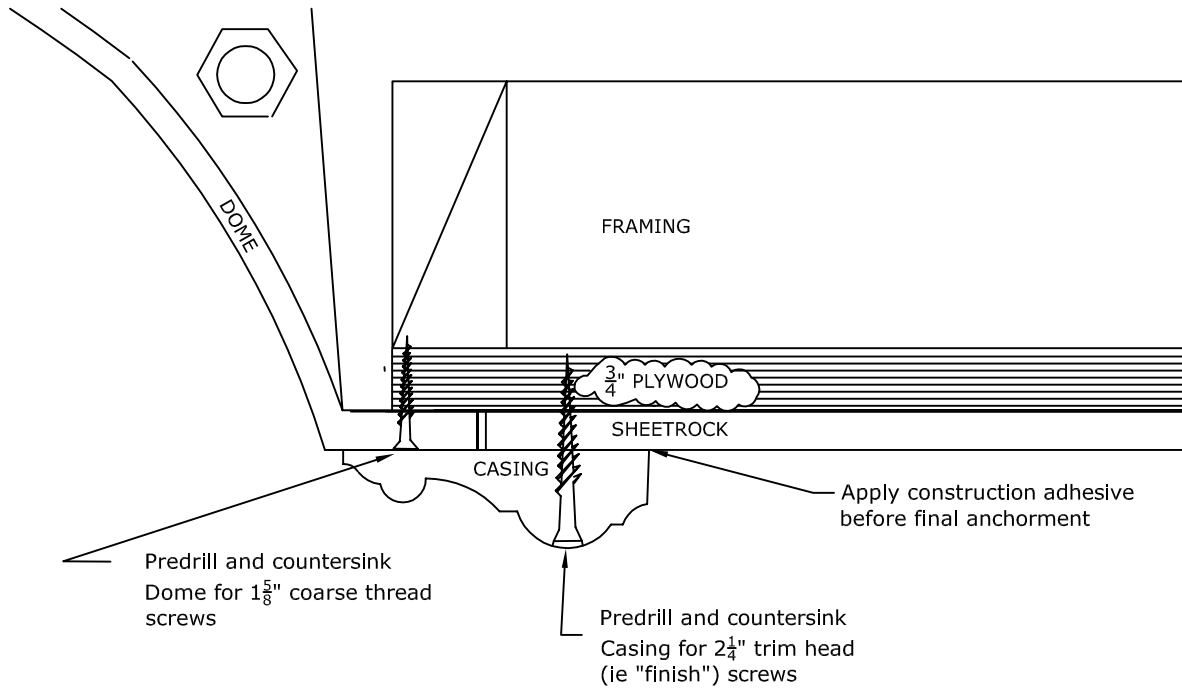
© Copyright 2018

RWM Inc.

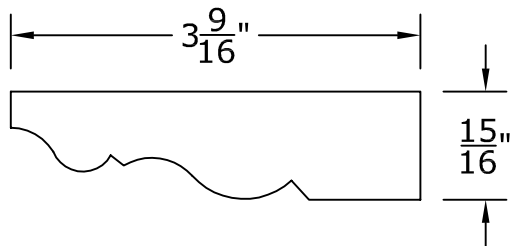
6419 South Cottonwood Street, Murray, Utah 84107
 Phone: 801-268-2400 Toll Free: 1-855-RWM-ARTS (796-2787)
 Fax: 801-268-2522 E-mail: info@rwm-inc.com

Visit our website at www.rwm-inc.com

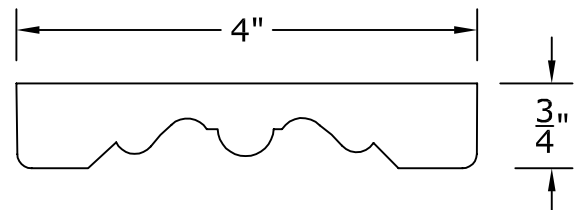
Standard Casing Profiles: For Select Larger Domes



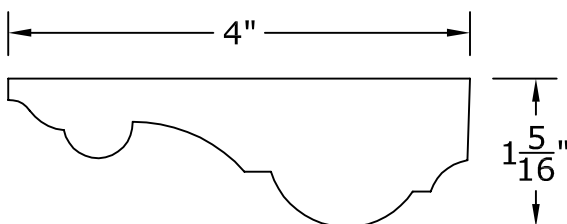
Profile 1



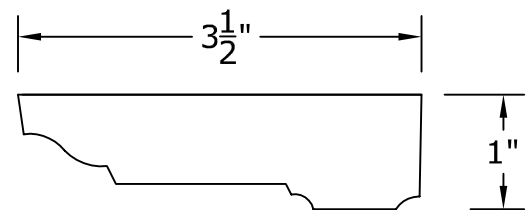
Profile 3



Profile 2



Profile 4





© Copyright 2018

RWM Inc.

6419 South Cottonwood Street, Murray, Utah 84107
 Phone: 801-268-2400 Toll Free: 1-855-RWM-ARTS (796-2787)
 Fax: 801-268-2522 E-mail: info@rwm-inc.com

Visit our website at www.rwm-inc.com

8" Casing: For Select Larger Domes

