



© Copyright 2018

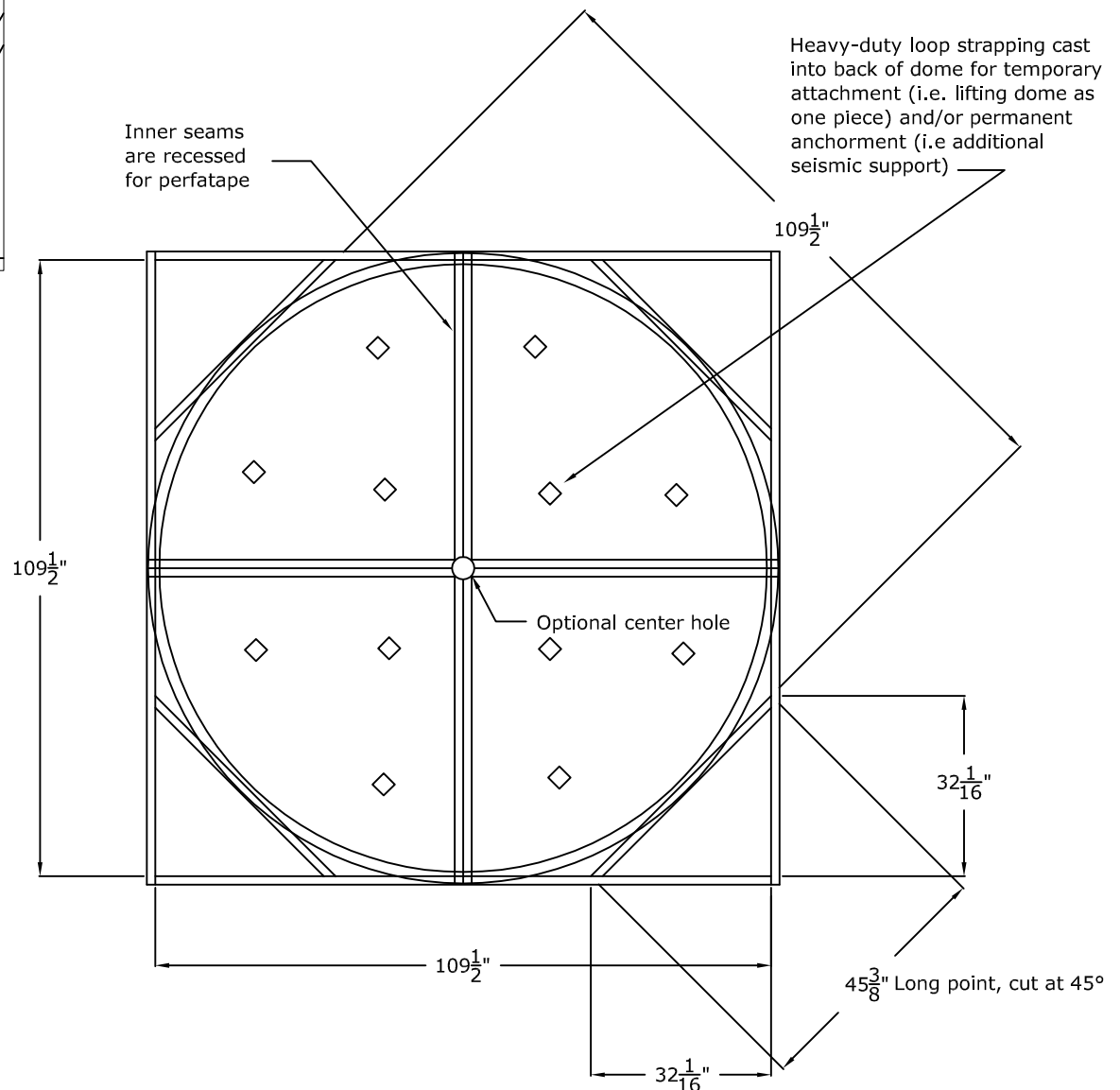
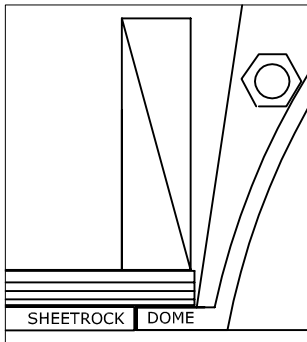
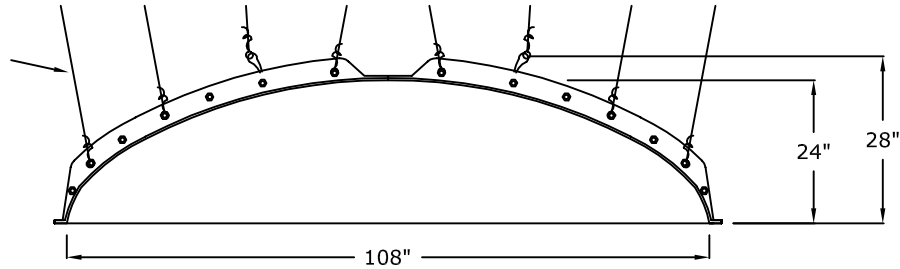
## RWM Inc.

6419 South Cottonwood Street, Murray, Utah 84107  
 Phone: 801-268-2400 Toll Free: 1-855-RWM-ARTS (796-2787)  
 Fax: 801-268-2522 E-mail: info@rwm-inc.com

Visit our website at [www.rwm-inc.com](http://www.rwm-inc.com)

### 9' Round Recessed Dome: 4 Parts with a 28" Overall Rise

Drill through both bolt  
 flanges for permanent  
 #9 tiewire  
 anchorment  
 (we recommend a  
 minimum of two per  
 flange)





© Copyright 2018

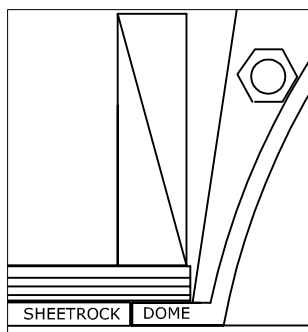
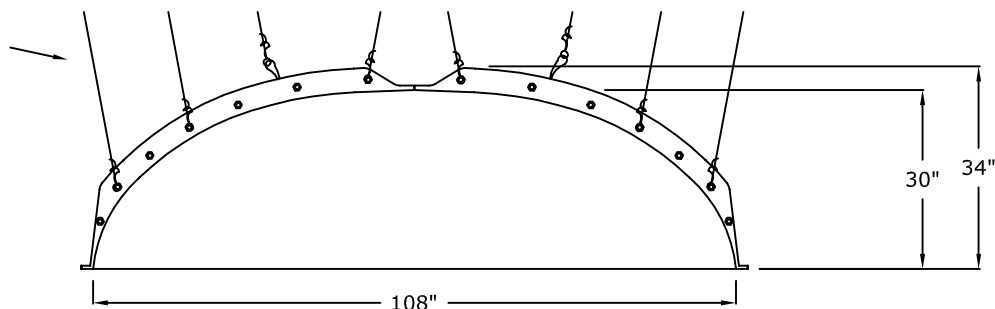
# RWM Inc.

6419 South Cottonwood Street, Murray, Utah 84107  
 Phone: 801-268-2400 Toll Free: 1-855-RWM-ARTS (796-2787)  
 Fax: 801-268-2522 E-mail: info@rwm-inc.com

Visit our website at [www.rwm-inc.com](http://www.rwm-inc.com)

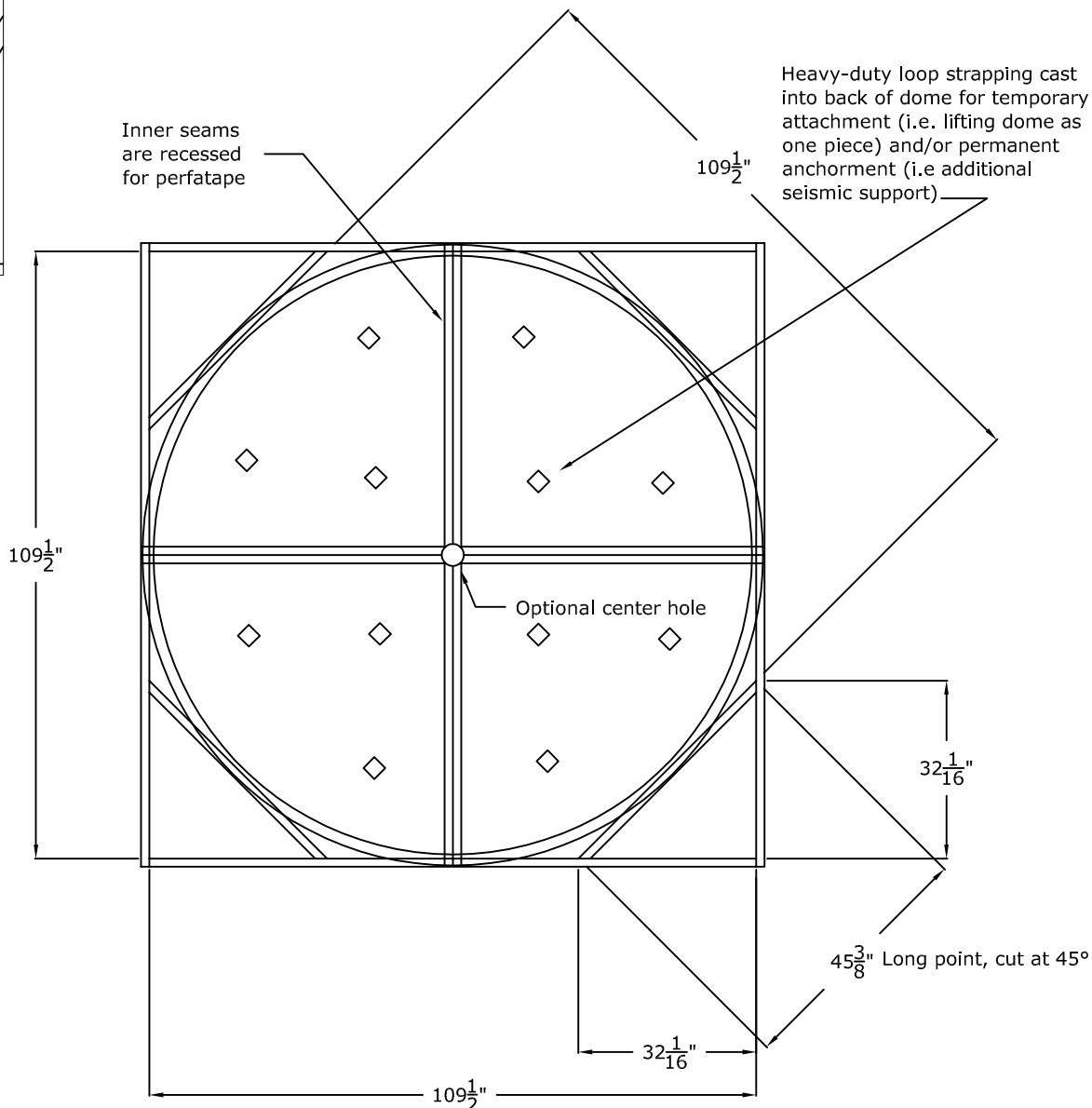
## 9' Round Recessed Dome: 4 Parts with a 34" Overall Rise

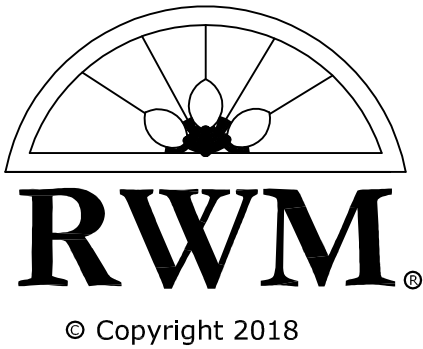
Drill through both bolt  
flanges for permanent  
#9 tiewire  
anchorment  
(we recommend a  
minimum of two per  
flange)



Inner seams  
are recessed  
for perfatape

Heavy-duty loop strapping cast  
into back of dome for temporary  
attachment (i.e. lifting dome as  
one piece) and/or permanent  
anchorment (i.e additional  
seismic support)



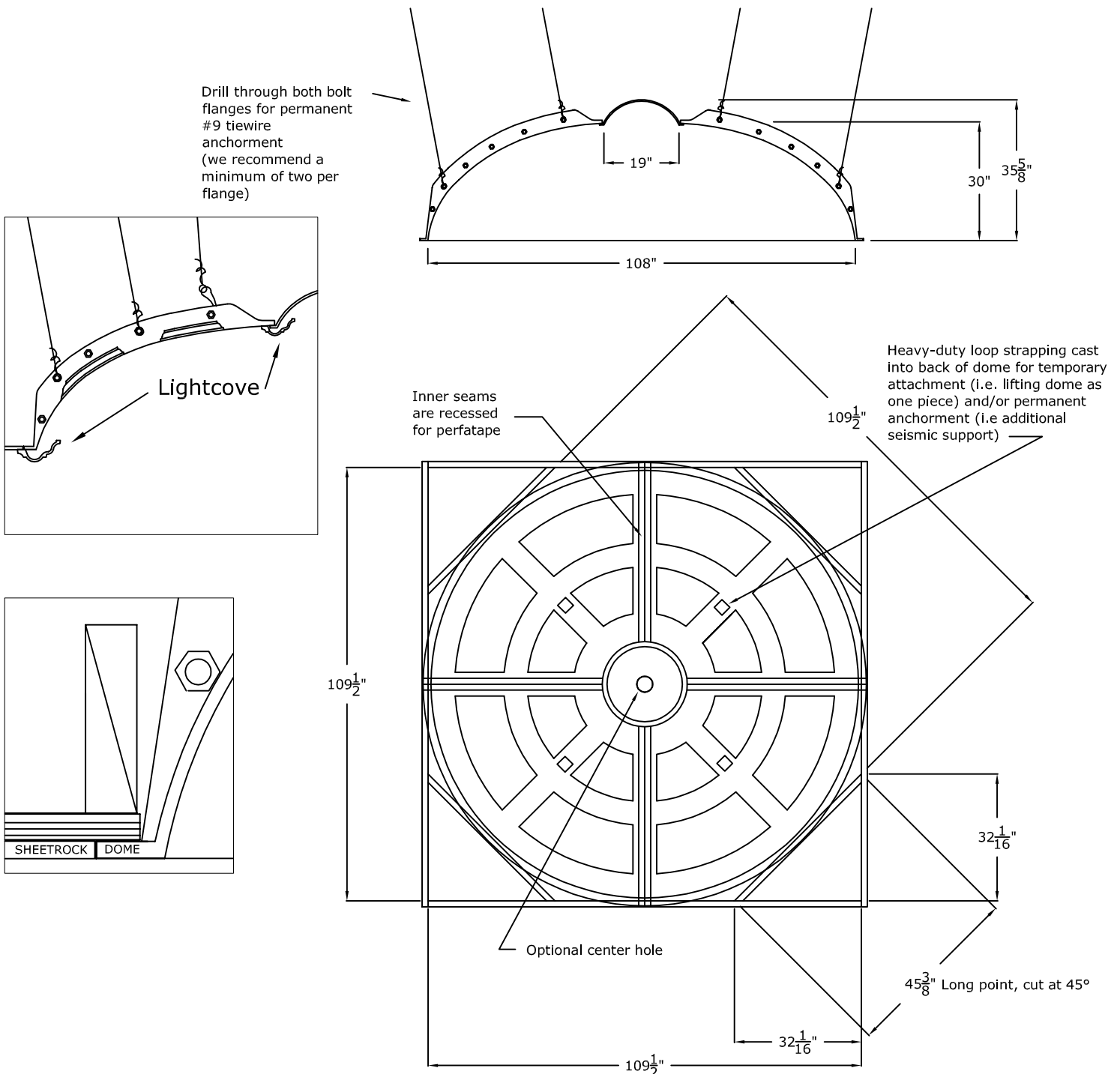


## RWM Inc.

6419 South Cottonwood Street, Murray, Utah 84107  
 Phone: 801-268-2400 Toll Free: 1-855-RWM-ARTS (796-2787)  
 Fax: 801-268-2522 E-mail: info@rwm-inc.com

Visit our website at [www.rwm-inc.com](http://www.rwm-inc.com)

### 9' Coffered Round Recessed Dome: 4 Parts with a $35\frac{5}{8}"$ Overall Rise (16 Panels) With 19" Top Dome & Lightcove





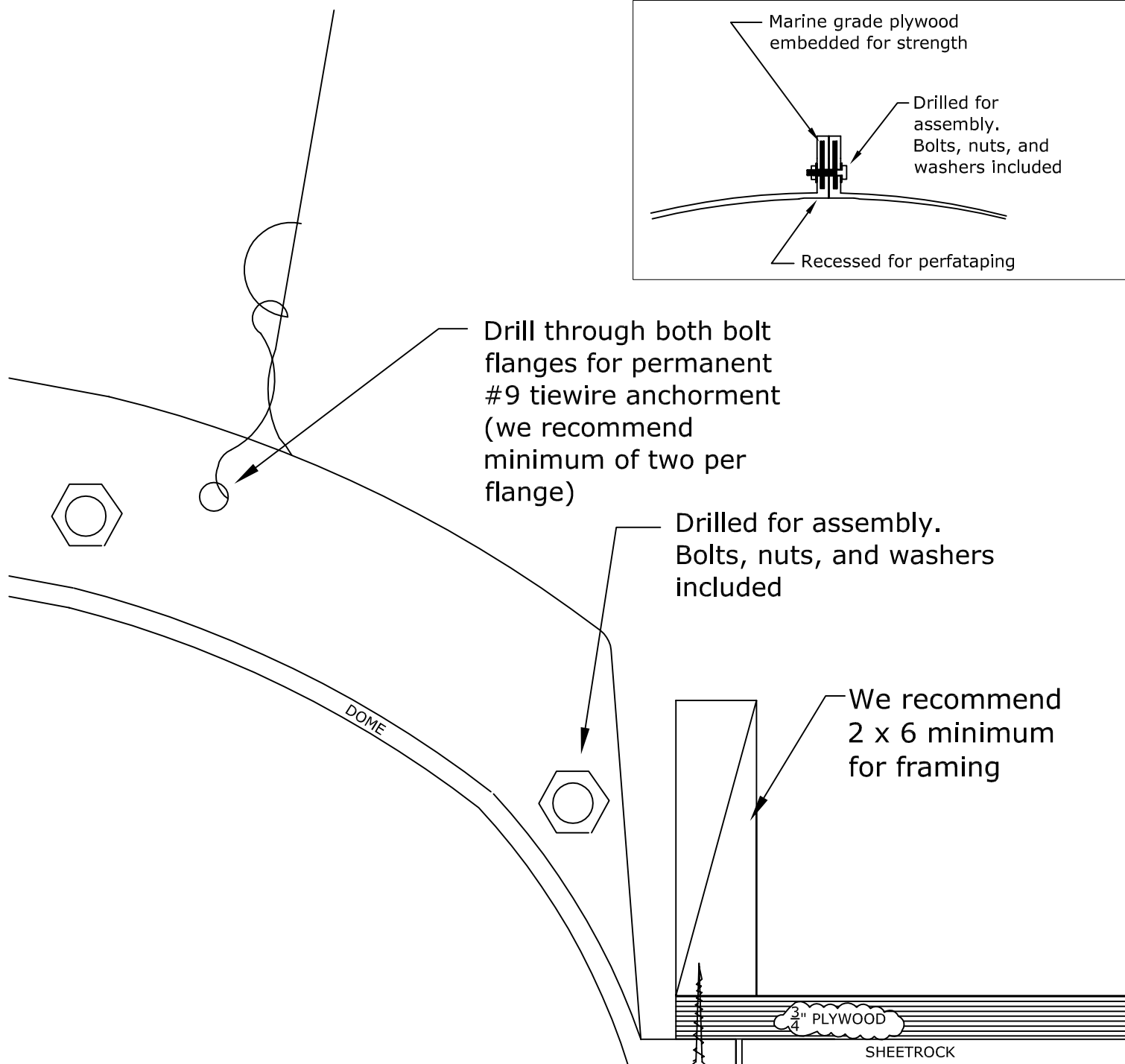
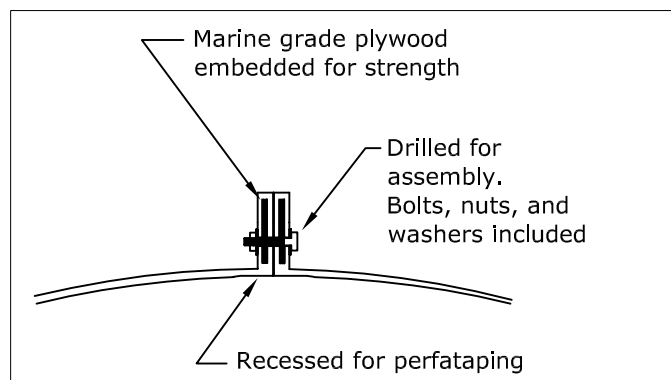
© Copyright 2018

## RWM Inc.

6419 South Cottonwood Street, Murray, Utah 84107  
Phone: 801-268-2400 Toll Free: 1-855-RWM-ARTS (796-2787)  
Fax: 801-268-2522 E-mail: [info@rwm-inc.com](mailto:info@rwm-inc.com)

Visit our website at [www.rwm-inc.com](http://www.rwm-inc.com)

### Bolt Flange Detail: Multi-Piece Domes



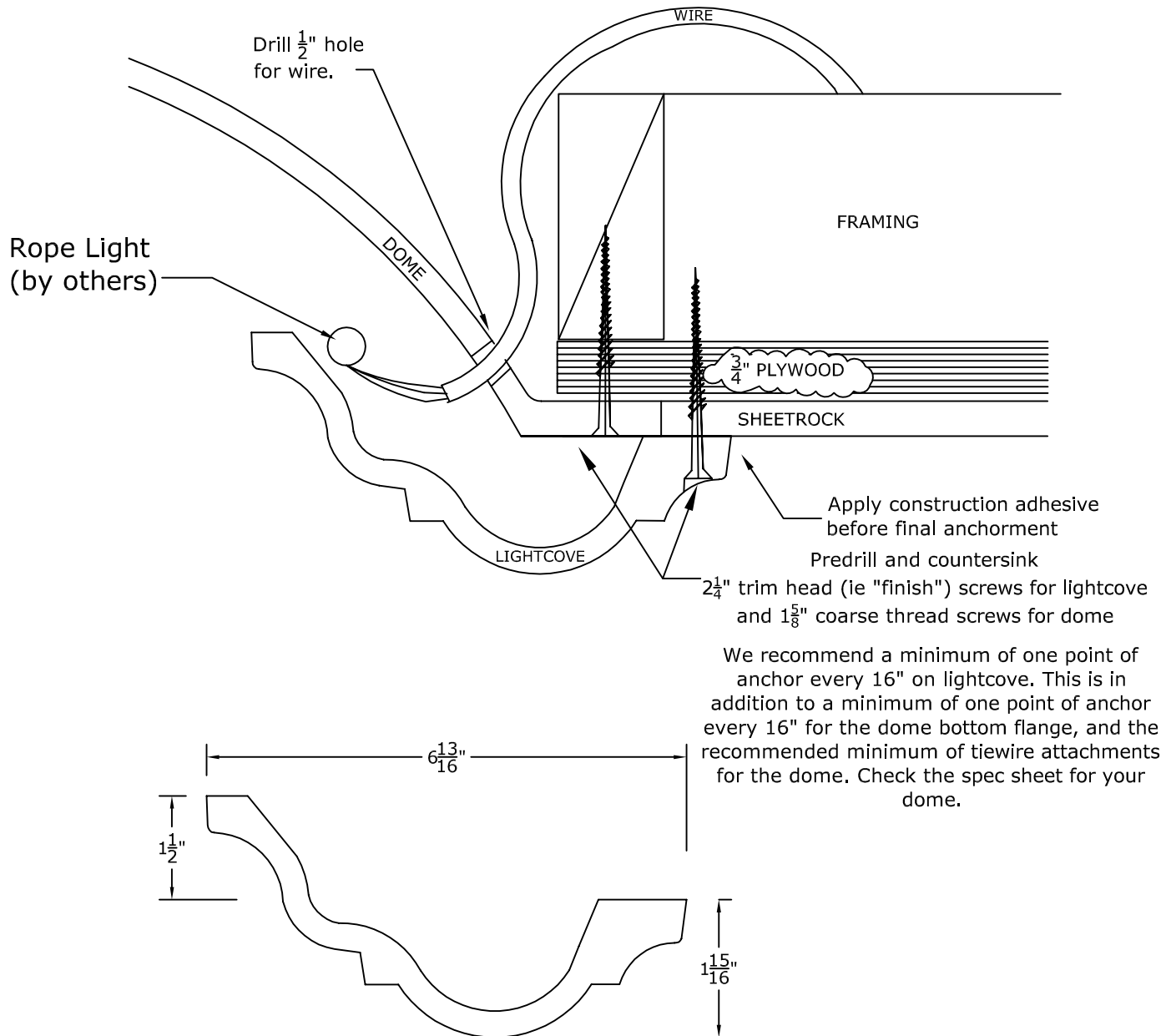


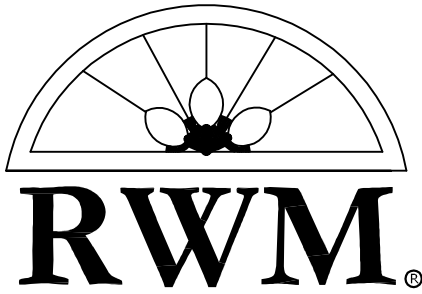
## RWM Inc.

6419 South Cottonwood Street, Murray, Utah 84107  
 Phone: 801-268-2400 Toll Free: 1-855-RWM-ARTS (796-2787)  
 Fax: 801-268-2522 E-mail: info@rwm-inc.com

Visit our website at [www.rwm-inc.com](http://www.rwm-inc.com)

### Traditional Lightcove: For Select Larger Domes





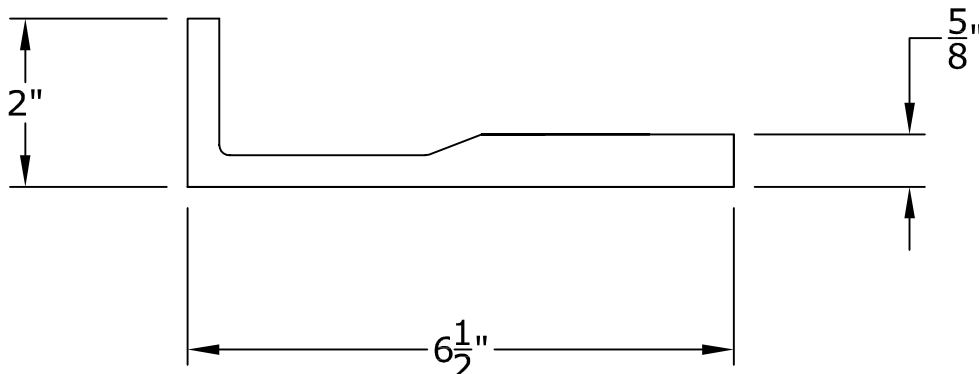
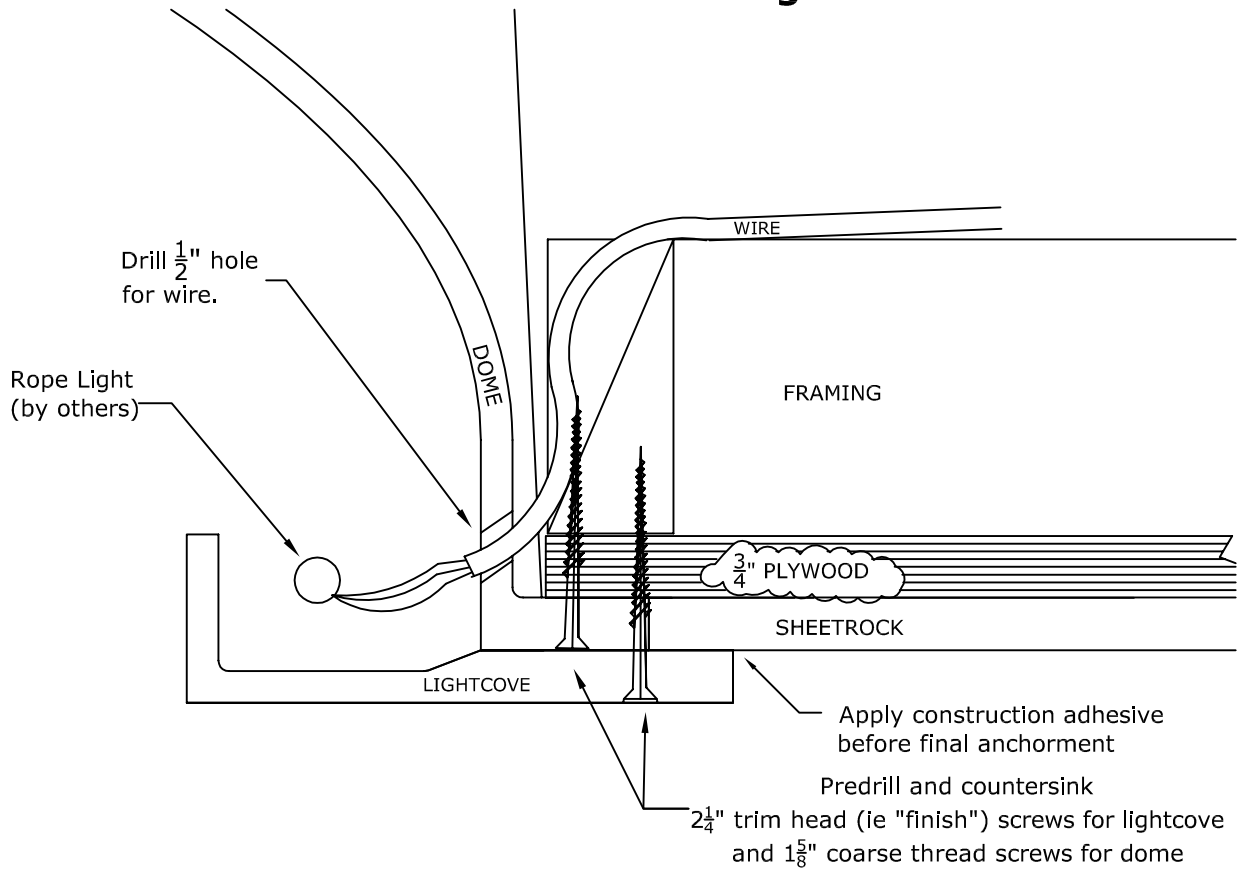
© Copyright 2018

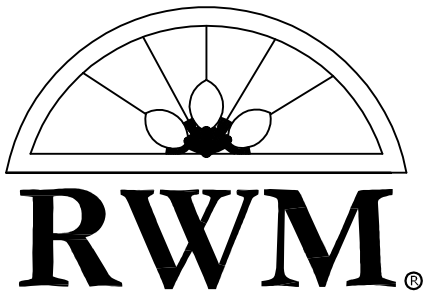
## RWM Inc.

6419 South Cottonwood Street, Murray, Utah 84107  
 Phone: 801-268-2400 Toll Free: 1-855-RWM-ARTS (796-2787)  
 Fax: 801-268-2522 E-mail: info@rwm-inc.com

Visit our website at [www.rwm-inc.com](http://www.rwm-inc.com)

### Contemporary Lightcove: For Select Larger Domes





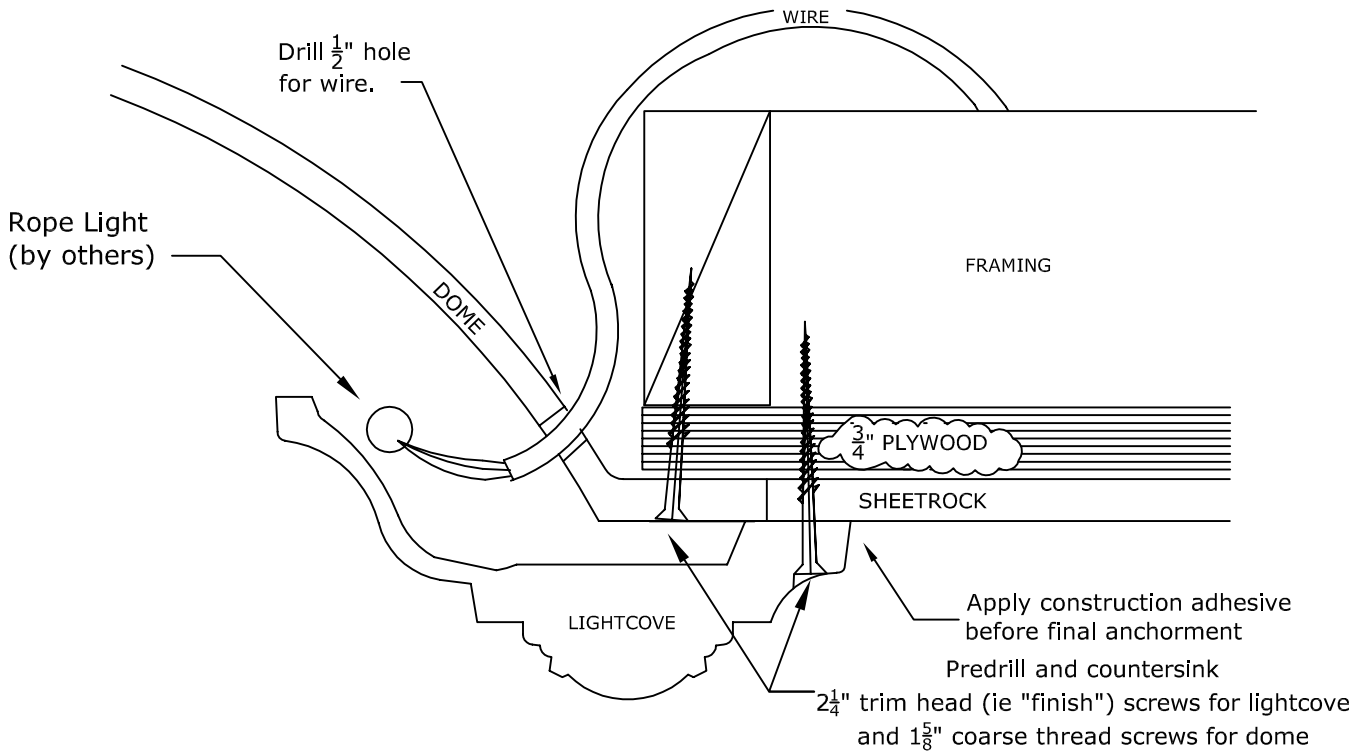
© Copyright 2018

## RWM Inc.

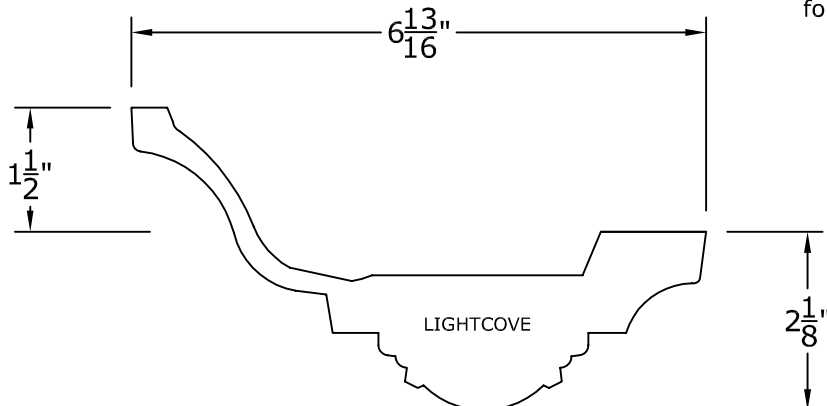
6419 South Cottonwood Street, Murray, Utah 84107  
 Phone: 801-268-2400 Toll Free: 1-855-RWM-ARTS (796-2787)  
 Fax: 801-268-2522 E-mail: info@rwm-inc.com

Visit our website at [www.rwm-inc.com](http://www.rwm-inc.com)

### Coin Lightcove: For Select Larger Domes



We recommend a minimum of one point of anchor every 16" on lightcove. This is in addition to a minimum of one point of anchor every 16" for the dome bottom flange, and the recommended minimum of tie wire attachments for the dome. Check the spec sheet for your dome.

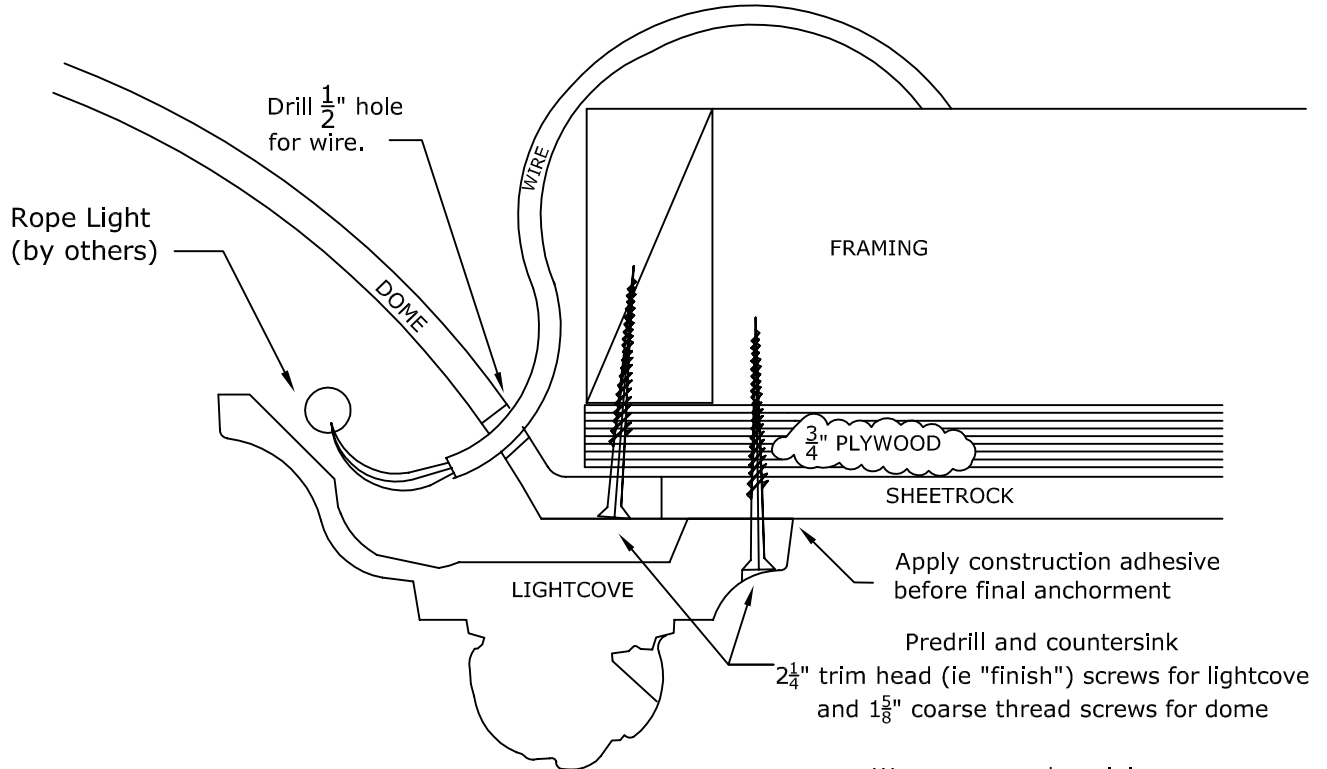




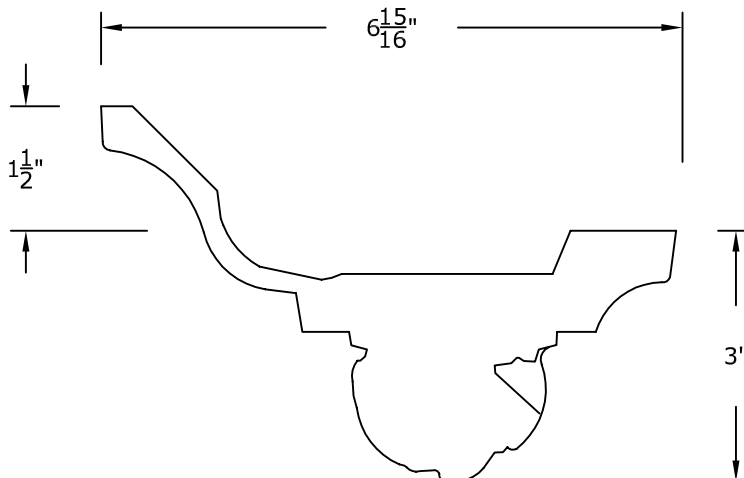
## RWM Inc.

6419 South Cottonwood Street, Murray, Utah 84107  
 Phone: 801-268-2400 Toll Free: 1-855-RWM-ARTS (796-2787)  
 Fax: 801-268-2522 E-mail: info@rwm-inc.com  
 Visit our website at [www.rwm-inc.com](http://www.rwm-inc.com)

### Acanthus & Pearl Lightcove: For Select Larger Domes



We recommend a minimum of one point of anchor every 16" on lightcove. This is in addition to a minimum of one point of anchor every 16" for the dome bottom flange, and the recommended minimum of tiewire attachments for the dome. Check the spec sheet for your dome.







© Copyright 2018

## RWM Inc.

6419 South Cottonwood Street, Murray, Utah 84107  
 Phone: 801-268-2400 Toll Free: 1-855-RWM-ARTS (796-2787)  
 Fax: 801-268-2522 E-mail: info@rwm-inc.com

Visit our website at [www.rwm-inc.com](http://www.rwm-inc.com)

### 8" Casing: For Select Larger Domes

